

IP Multimedia Subsystem

Release 6.1

Solution Software Upgrade

Solution SU
275-100-035R6.1
Issue 1
August 2007

Alcatel, Lucent, Alcatel-Lucent and the Alcatel-Lucent logo are trademarks of Alcatel-Lucent. All other trademarks are the property of their respective owners.

The information presented is subject to change without notice. Alcatel-Lucent assumes no responsibility for inaccuracies contained herein.

Copyright © 2007 Alcatel-Lucent. All Rights Reserved.

Notice

Every effort was made to ensure that the information in this information product was complete and accurate at the time of publishing. However, information is subject to change. This information product describes certain hardware, software, features, and capabilities of Lucent Technologies products. The hardware, software, features, and capabilities described may not be the same as the equipment that you have. The information product is for information purposes, and you are cautioned that it may not describe your specific equipment.

Limited Warranty

The IMS solution consists of component parts that are designed to operate in the manner that the solution is configured when provided to the customer. Changes to system level configurations that have been set "at the factory" can affect the availability, throughput, standards compliance and stability of the product and result in expanded unplanned downtimes as unforeseen issues arise with untested configuration settings. Changes from factory settings can result in violation of warranty and maintenance agreements with Alcatel-Lucent and should not be performed without the expressed written consent of Alcatel-Lucent Technologies.

Ordering information

The ordering number for this Information Product is as stated on the front page.

To order, use one of the following numbers:

Within the United States: 1-888-LUCENT8 (1-888-582-3688; Fax: 1-888-566-9568)

Within Canada: +1 317 322 6615 (Fax: +1 317 322 6359)

All other countries: +1 317 322 6416 (Fax: +1 317 322 6699)

Technical support

For initial technical assistance, please call one of the following numbers:

North America, Central and Latin America and Asia Pacific regions:

Customer Technical Assistance Management (CTAM) center: +1 630 713 0488

Europe, Middle East and African regions:

International Customer Management Center (ICMC): +353 1692 4579

Information product support

For non-technical questions or comments regarding this information product, please call one of the following numbers:

North America, Central and Latin America and Asia Pacific regions:

Customer Technical Assistance Management (CTAM) center: +1 630 713 0488

Europe, Middle East and African regions: International Customer Management Center (ICMC): +353 1692 4579

Developed by Alcatel-Lucent Technologies

Contents

About this information product

Purpose	vii
Reason for reissue	vii
Intended audience	vii
How to use this information product	vii
Systems supported	vii
Conventions used	viii
Related documentation	ix
Related training	ix
Tasks	ix
How to comment	x

1 IMS solution overview

Overview	1-1
Alcatel-Lucent IMS architecture	1-2
Alcatel-Lucent IMS Media and Endpoint layer products	1-4
Alcatel-Lucent IMS Session Control layer products	1-6
Alcatel-Lucent IMS Application layer products	1-8
Alcatel-Lucent IMS OAM&P products	1-10

2 Configuration management - software upgrade

Overview	2-1
----------------	-----

Upgrade introduction

Overview 2-3

Software upgrade introduction 2-4

Software upgrade definitions 2-5

Sequential upgrade process flows

Overview 2-7

Sequential software upgrade flow for the IMS solution 2-8

Software upgrade flow for VitalSuite products 2-13

Software upgrade flow for eSM element 2-16

Software upgrade flow for OMC-H and managed related elements 2-18

Software upgrade flow for Lucent SDHLS and *Datagrid* 2-20

Software upgrade flow for OMC-CN 2-22

Software upgrade flow for MiLife SurePay CCF elements 2-24

Software upgrade flow for OMC-P 2-26

Software upgrade flow for Lucent CM elements 2-28

Software upgrade flow for Lucent Gateway Platform elements 2-30

Software upgrade flow for AudioCodes elements 2-33

Software upgrade flow for AnyPath Messaging System elements 2-35

Software upgrade flow for the Lucent Control Platform 2-37

Software upgrade flow for Lucent FS3000 elements 2-41

Software upgrade flow for MiLife Application Server supported elements 2-43

Parallel upgrade process flows

Overview 2-46

Parallel software upgrade flow for the IMS solution 2-47

Software upgrade flow for VitalSuite products 2-50

Software upgrade flow for EMS/Portal products 2-53

Software upgrade flow for NE/AS products 2-57

Contents

Software upgrade flow for Lucent CP products 2-61

Software upgrade flow for Application Servers 2-64

Glossary

Index

About this information product

Purpose

The IP Multimedia Subsystem (IMS) solution Software Upgrade contains descriptive information and high-level procedures for performing SU tasks on the network elements used in the Alcatel-Lucent IMS solution.

Reason for reissue

This table documents the change history:

Issue	Date	Remarks
1	August 2007	First release

Intended audience

This information product is written for:

- Personnel performing SU tasks on the IMS
- Personnel familiar with changing network element software required for their IMS solution

How to use this information product

This information product is not intended to be all-inclusive, but should be used in combination with Alcatel-Lucent Technologies product documents and other third-party documents.

Systems supported

Important! Software upgrades must be performed sequentially. Skip releases are not supported.

This information product applies to following IMS Solution:

Load
R03.01.n
R04.01.n
R05.00.n
R05.01.n
R06.01.n

Examples:

R03.01 to R04.01

R04.01 to R05.00

R05.00 to R05.01

R05.01. to R06.01.

Conventions used

Measurements are shown in metric notation first followed by the imperial equivalent, for example: 25.4 mm (1 inch).

This table summarizes presentation conventions:

Convention	Meaning
output	A system output message
cd /var/ptt	A command entered by the user (user input)
[Return]	Keyboard entries
<i>[IP_address]</i>	Variable parameters
<i>filename</i>	File name
cd /var/flx	Directory path
Provisioning	Graphical User Interface string
APx	Variable entities

Related documentation

The IMS solution level documentation set consists of the following information products:

Title	Ordering number
<i>IP Multimedia Subsystem Solution Technical Description</i>	275-100-000
<i>IP Multimedia Subsystem Solution OAM&P</i>	275-100-001
<i>IP Multimedia Subsystem Solution Site Preparation</i>	275-100-002
<i>IP Multimedia Subsystem Solution Engineering Job Aid</i>	275-100-003

Refer to the [OLCS documentation section \(https://support.lucent.com/portal/olcsHome.do\)](https://support.lucent.com/portal/olcsHome.do) for Alcatel-Lucent and third-party network elements documentation that provides the following information:

- Detailed functional descriptions
- Detailed architecture specifications
- Network element installation and configuration
- Network element operations, administration, maintenance, and provisioning (OAM&P)

Related training

Title	Ordering number
<i>IMS Solution Introduction</i>	IM1901
<i>IMS Solution OAM&P Concepts</i>	IM1501

Tasks

This information product describes tasks to:

- Prepare systems for upgrade
- Locate software upgrade packages
- Install software upgrade packages
- Verify proper system functionality

How to comment

To comment on this information product, go to the [Online Comment Form](http://www.lucent-info.com/comments/enus/) (<http://www.lucent-info.com/comments/enus/>) or e-mail your comments to the Comments Hotline (comments@alcatel-lucent.com).

1 IMS solution overview

Overview

Purpose

This section describes the products used in the Alcatel-Lucent IMS solution.

Contents

Alcatel-Lucent IMS architecture	1-2
Alcatel-Lucent IMS Media and Endpoint layer products	1-4
Alcatel-Lucent IMS Session Control layer products	1-6
Alcatel-Lucent IMS Application layer products	1-8
Alcatel-Lucent IMS OAM&P products	1-10



Alcatel-Lucent IMS architecture

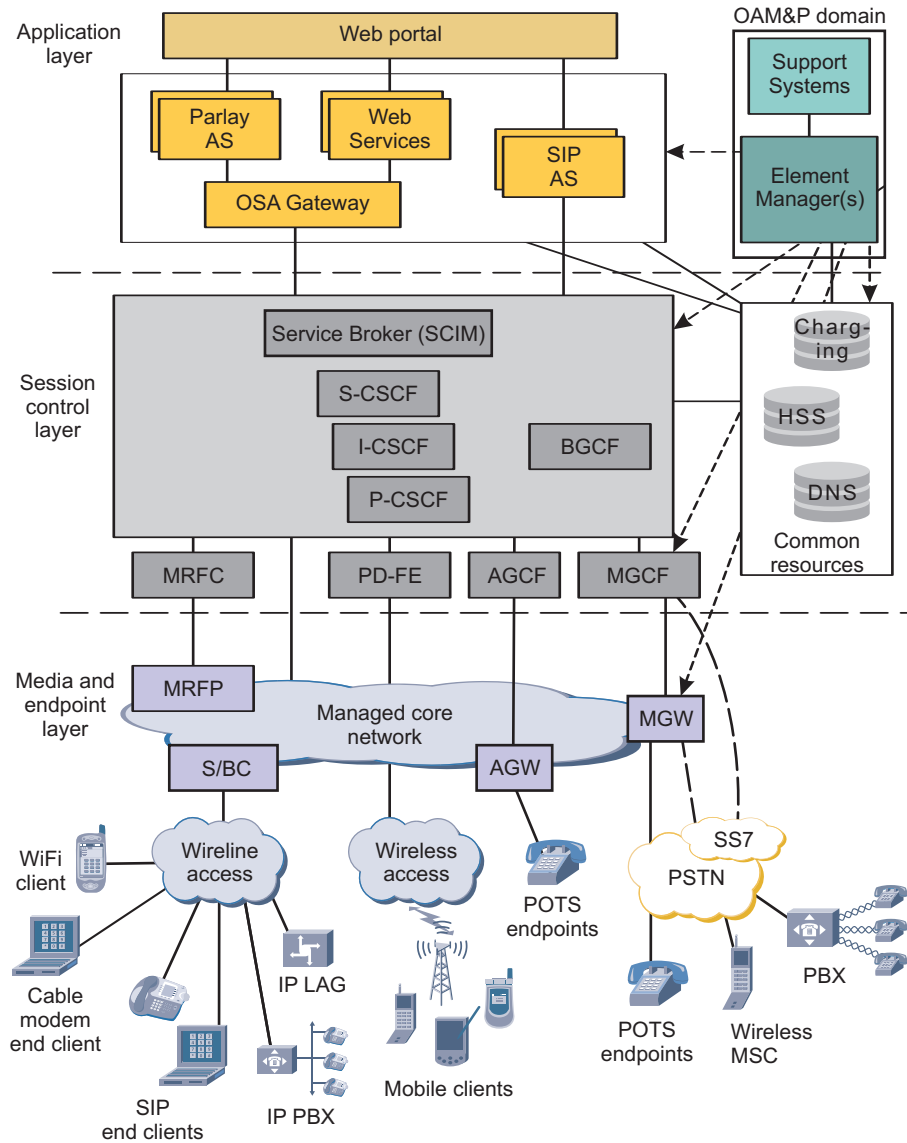
Overview

The Alcatel-Lucent IMS is a layered architecture that consists of the following elements:

- Media and Endpoint layer
- Session Control layer
- Application layer
- OAM&P domain for network management and provisioning

Reference diagram

The Alcatel-Lucent IMS architecture is shown in the following picture:



□

Alcatel-Lucent IMS Media and Endpoint layer products

Overview

The Alcatel-Lucent IMS provides the following Alcatel-Lucent and third-party vendor products for the functions in the IMS Media and Endpoint layer.

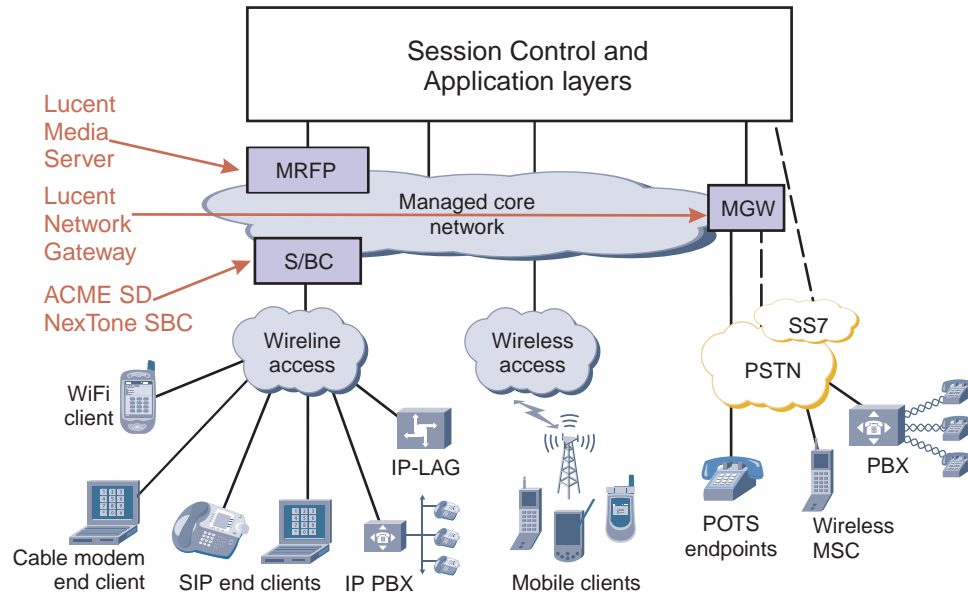
Function - product mapping

The Alcatel-Lucent IMS Media and Endpoint layer consists of the following products:

IMS function name	Alcatel-Lucent IMS product name
Endpoints	Wireline: <ul style="list-style-type: none"> • SIP hardphone • Softphone (for laptops) Wireless: <ul style="list-style-type: none"> • 3G 1x and/or Evolution data only (EVDO) handset • General Packet Radio Service (GPRS) / Enhanced Data Rates for GSM Evolution (EDGE) and Universal Mobile Telecommunication System (UMTS) High Speed Download Packet Access (HSDPA) handset • WiFi handset • Lucent SIP client • Dual mode handsets (WLAN and GSM/UMTS)
MGW	<ul style="list-style-type: none"> • Lucent Network Gateway • Lucent Compact Switch
AGCF	Lucent Network Controller
MRFP	<ul style="list-style-type: none"> • Lucent Media Resource Server (LMRS) which provides both MRFP and MRFC functionality • <i>AudioCodes IPmedia</i>[™] media server family • Service provider-selected third-party application server with integrated MRFP
S/BC	<ul style="list-style-type: none"> • NexTone Session Border Controller • Acme Packet Net-Net Session Director
IP-LAG	<ul style="list-style-type: none"> • <i>AnyMedia</i>[®] LAG 4300 • <i>AnyMedia</i>[®] LAG 2300 • <i>AnyMedia</i>[®] LAG 1900

Reference diagram

The following products are available in the Alcatel-Lucent IMS Media and Endpoint layer:



Alcatel-Lucent IMS Session Control layer products

Overview

The Alcatel-Lucent IMS provides the following products for the functions in the IMS Session Control layer.

Function - product mapping

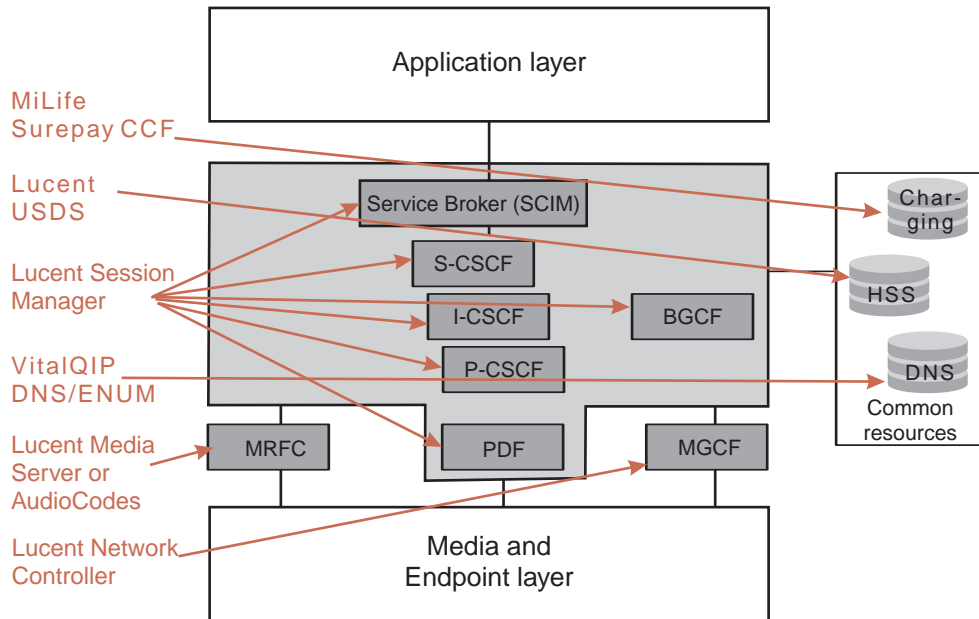
The Alcatel-Lucent IMS Session Control layer consists of the following products:

IMS function name	Alcatel-Lucent IMS product name
MRFC	<ul style="list-style-type: none"> Lucent Media Resource Server (LMRS) which provides both MRFP and MRFC functionality AudioCodes IPmedia™ media server family Service provider-selected third-party application server with integrated MRFC
MGCF	Lucent Network Controller Based on: <ul style="list-style-type: none"> Lucent Gateway Platform Lucent Control Platform
P-CSCF I-CSCF S-CSCF	Lucent Session Manager
BGCF	Lucent Session Manager
PDF	Integrated with the P-CSCF on the Lucent Session Manager
Service Broker or SCIM	Lucent Service Broker on the Lucent Session Manager
IMS Emergency Application Server or (IEAS)	IEAS on the Lucent Session Manager
IMS E.164 Expansion Server (EEAS)	EEAS on the Lucent Session Manager
AGCF	Lucent Network Controller
HSS	Lucent Unified Subscriber Data Server (Lucent USDS)
DNS, DHCP, and ENUM	Lucent <i>VitalQIP</i> ® DNS/DHCP and IP Management Software

IMS function name	Alcatel-Lucent IMS product name
Charging System	<ul style="list-style-type: none"> • Lucent <i>MiLife</i>® <i>SurePay</i>® CCF • Lucent <i>Milife</i>®<i>SurePay</i>® CGF

Reference diagram

The Alcatel-Lucent IMS Session Control layer consists of the following products:



□

Alcatel-Lucent IMS Application layer products

Overview

The Alcatel-Lucent IMS provides the following Alcatel-Lucent and third-party vendor products for the functions in the IMS Application layer.

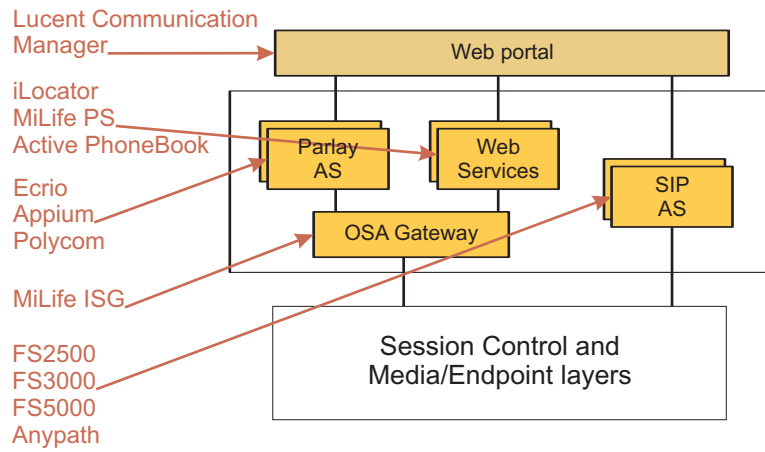
Function - product mapping

The Alcatel-Lucent IMS Application layer consists of the following products:

Function name	Alcatel-Lucent IMS product name
Application Servers	<p>SIP application servers:</p> <ul style="list-style-type: none"> • Lucent Feature Server 5000 • Lucent Feature Server 2500 • Lucent Feature Server 3000 • <i>AnyPath</i>[®] Messaging System • Lucent Active PhoneBook • <i>MiLife</i>[®] Presence Solution • <i>MiLife</i>[®] iLocator <p>OSA gateway to Parlay application servers</p> <ul style="list-style-type: none"> • Lucent <i>MiLife</i>[®] Intelligent Services Gateway (ISG) running on the <i>MiLife</i>[®] Application Server (MAS) platform <p>Parlay application servers:</p> <ul style="list-style-type: none"> • Third-party application servers for instant messaging and presence/location services such as Ecrio, Polycom, and Appium
Web portal	Lucent Communication Manager

Reference diagram

The Alcatel-Lucent IMS Application layer consists of the following products:



Alcatel-Lucent IMS OAM&P products

Overview

The Alcatel-Lucent IMS provides the following products for the functions in the IMS OAM&P domain.

The OAM&P domain consists of:

- Element Management Systems (EMS)
- Network Management Systems (NMS)
- Operations Support Systems (OSS)

Important! OAM&P for the access and transport networks is outside the scope of this document. Network elements of the access and transport networks have their own management systems and interfaces.

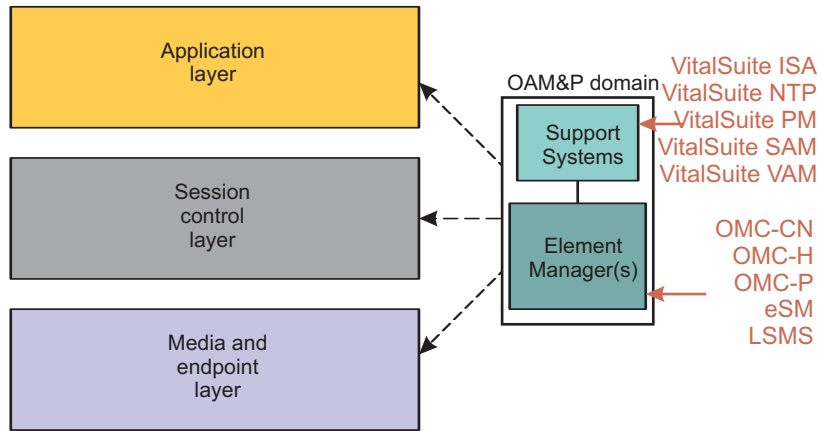
Function - product mapping

The Alcatel-Lucent IMS OAM&P domain consists of the following products:

Function name	Alcatel-Lucent IMS product name
Element management systems	Lucent EMSs: <ul style="list-style-type: none"> • OMC-CN • OMC-P • OMC-H • eSM • Lucent Security Management Server Third-party applications and elements have their own dedicated element management systems. These include EMSs for the following components: <ul style="list-style-type: none"> • Session Border Controller NE • Third-party applications such as Ecrio
Network management systems	<ul style="list-style-type: none"> • Lucent <i>VitalSuite</i>[®] ISA • Lucent <i>VitalSuite</i>[®] VitalNet • Lucent <i>VitalSuite</i>[®] NTP
Operations support systems	<ul style="list-style-type: none"> • Lucent <i>VitalSuite</i>[®] Service Activation Manager (SAM) • Lucent <i>VitalSuite</i>[®] Voice Activation Manager (VAM)

Reference diagram

The Alcatel-Lucent IMS OAM&P domain consists of the following products:



2 Configuration management - software upgrade

Overview

Purpose

This chapter provides configuration management tasks and guidance for software upgrade in the IMS network.

Contents

Upgrade introduction	2-3
Software upgrade introduction	2-4
Software upgrade definitions	2-5
Sequential upgrade process flows	2-7
Sequential software upgrade flow for the IMS solution	2-8
Software upgrade flow for VitalSuite products	2-13
Software upgrade flow for eSM element	2-16
Software upgrade flow for OMC-H and managed related elements	2-18
Software upgrade flow for Lucent SDHLS and Datagrid	2-20
Software upgrade flow for OMC-CN	2-22
Software upgrade flow for MiLife SurePay CCF elements	2-24
Software upgrade flow for OMC-P	2-26
Software upgrade flow for Lucent CM elements	2-28
Software upgrade flow for Lucent Gateway Platform elements	2-30
Software upgrade flow for AudioCodes elements	2-33
Software upgrade flow for AnyPath Messaging System elements	2-35
Software upgrade flow for the Lucent Control Platform	2-37
Software upgrade flow for Lucent FS3000 elements	2-41

Software upgrade flow for MiLife Application Server supported elements	2-43
Parallel upgrade process flows	2-46
Parallel software upgrade flow for the IMS solution	2-47
Software upgrade flow for VitalSuite products	2-50
Software upgrade flow for EMS/Portal products	2-53
Software upgrade flow for NE/AS products	2-57
Software upgrade flow for Lucent CP products	2-61
Software upgrade flow for Application Servers	2-64



Upgrade introduction

Overview

Purpose

This section provides general upgrade concepts and examples.

Contents

Software upgrade introduction	2-4
Software upgrade definitions	2-5



Software upgrade introduction

Purpose

This document will be a guideline for the network elements involved in an IMS solution upgrade and to provide the appropriate procedures each of the network elements as it relates to the upgrading of the network element itself.

Guideline

The described process flows in this document are guidelines for the sequence of the upgrade process that the least amount of system downtime or network element unavailability is realized.

When not applicable steps can be skipped.

Release Notes

Check the Release Notes for the *NEW* software release to verify if there are additional and or updated procedures.

Entrance criteria

To prepare the Upgrade procedures use the *NE-NLT Entrance Criteria Checklists*.

Access the NE-NLT checklists is available via: <http://openetsrv.ho.lucent.com/NLT/3.01.11/Binder/> (<http://openetsrv.ho.lucent.com/NLT/3.01.11/Binder/>).



Software upgrade definitions

Purpose

This topic provides definitions that are used for upgrade processes.

Upgrade definitions

End to End IMS Upgrade An end to end IMS upgrade, for the purposes of this document, will cover all the Lucent Technologies' products and applications, along with some 3rd party products used in Lucent IMS Solution offering.

The end to end upgrade strategy does not include some 3rd party application servers which may be a part of an IMS Solution or IMS end-user client software.

Hot Upgrade The term "hot-upgrade" is a software upgrade that does not experience any interruption in stable sessions.

Transient sessions may be interrupted during a hot upgrade.

Software Upgrade / Retrofit The methods and procedures whereby an in-service transition takes place from one software generic to a newer software generic release, sometimes referred to as a generic retrofit.

The upgrade is designed to add new features and functionalities to the IMS network and to counteract errors previously detected but not fixed in a software patch.

Each upgrade of a network element includes a step to soak the new software and check for its sanity and then to commit the new software load once the sanity has been verified.

Software Update A software update consists of a number of changes to a software generic that includes fault corrections and feature enhancements that have accumulated over a period of time between major generic releases.

A software update is also referred to as a maintenance release, point release, or a dot release. The frequency of a software update may be several times a year.

Outage definitions

Partial Outage A significant event, but not one that is classified as a Total System Outage. A significant event is defined to be a loss greater than 10% of provisioned Network Element capacity for originations/terminations of a Network Element for a period greater than 30 seconds.

Total Outage Total loss (100%) of capacity for originations and/or terminations for voice and data traffic due to causes affecting the Network Element for more than 30 seconds.

Session definitions

Session A session refers to an IMS service that is established for an active user.

Examples of sessions can be a voice call, video call or a text messaging “call”. Once the user is actively engaged the session is considered stable.

Stable Call A call that is in the talking state (i.e. either voice or data is being transmitted) and no transient call activity is being initiated.

Transient Call A call that is in a state of potential change, for example, receiving dial tone, dialing, ringing, transferring negotiating media and establishing bearer connectivity.



Sequential upgrade process flows

Overview

Purpose

This section describes task flows and references to perform sequential software upgrade in IMS.

Contents

Sequential software upgrade flow for the IMS solution	2-8
Software upgrade flow for VitalSuite products	2-13
Software upgrade flow for eSM element	2-16
Software upgrade flow for OMC-H and managed related elements	2-18
Software upgrade flow for Lucent SDHLS and Datagrid	2-20
Software upgrade flow for OMC-CN	2-22
Software upgrade flow for MiLife SurePay CCF elements	2-24
Software upgrade flow for OMC-P	2-26
Software upgrade flow for Lucent CM elements	2-28
Software upgrade flow for Lucent Gateway Platform elements	2-30
Software upgrade flow for AudioCodes elements	2-33
Software upgrade flow for AnyPath Messaging System elements	2-35
Software upgrade flow for the Lucent Control Platform	2-37
Software upgrade flow for Lucent FS3000 elements	2-41
Software upgrade flow for MiLife Application Server supported elements	2-43



Sequential software upgrade flow for the IMS solution

Purpose

This topic describes the process to perform an end to end software upgrade for IMS.

The process describes the order in which the IMS network element must be upgraded and provides references to upgrade procedures of the network elements.

Basic order of software upgrade

The software upgrade follows the following order:

1. Upgrade management system
2. Upgrade network elements associated with the management system
3. Verify software upgrade

Important! The Ethernet routers and Session Border Controllers are not part of the sequential software upgrade approach and should be upgraded 1-2 weeks in advance.

Upgrade of additional or optional network elements

Process stages for network elements that are not part of your IMS network can be skipped.

Check the Release Notes for the *NEW* software release to verify if additional or optional network elements also require software upgrades

Software upgrade failure

If a software upgrade for a network element fails, perform a software back out

Refer to the documentation set of the network element for information about how to act in case of a software upgrade failure.

Before you begin

Before you begin the end to end software upgrade of the IMS network, make backups or ensure you have recent backups available.

Refer to the *IMS Solution Release Notes* of the IMS network for requirements that are specific for the upgrade procedure for the IMS network.

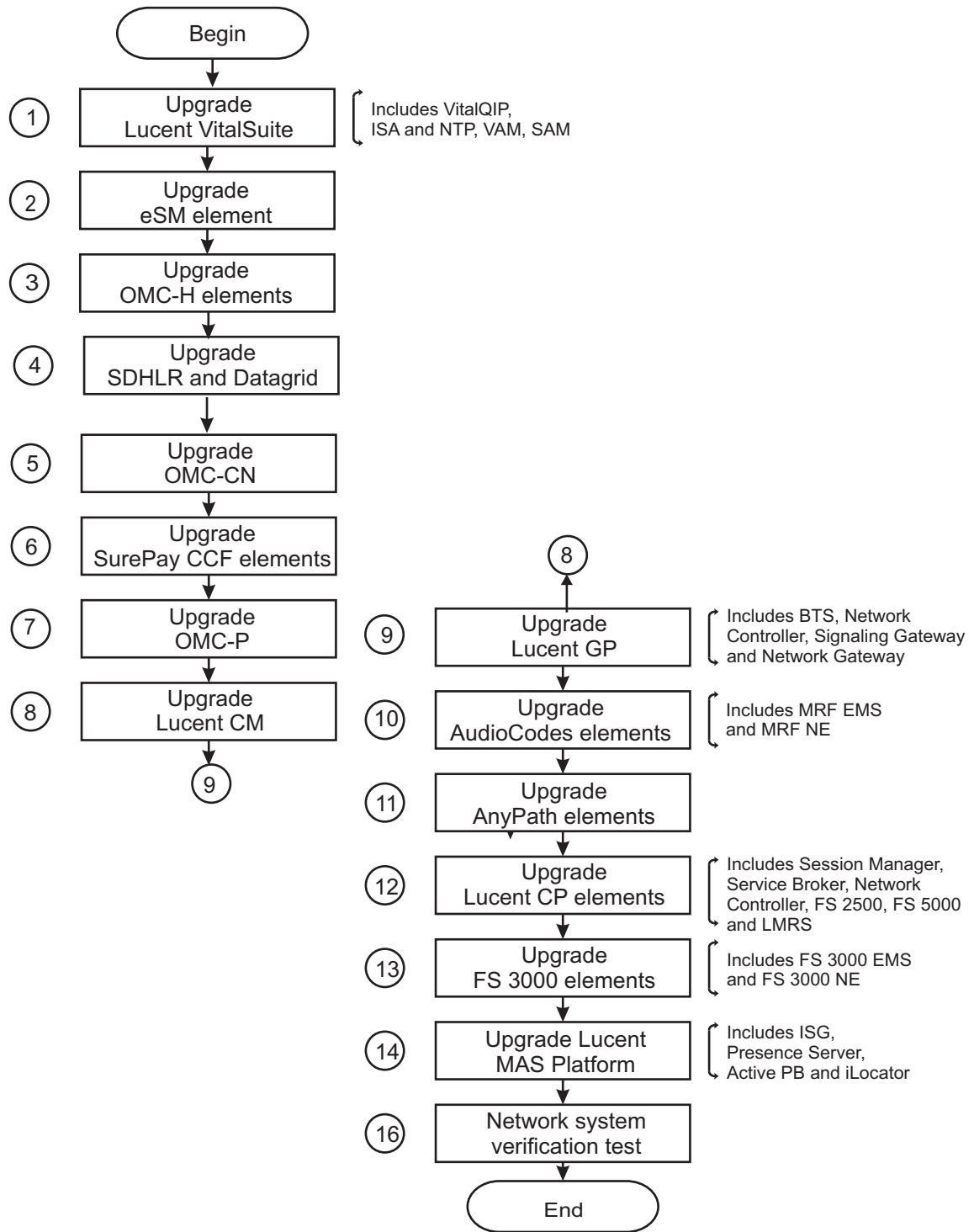
Refer to the *documentation set* and the *Release Notes* of the network element for requirements that are specific for the upgrade procedure for that network element.

Guideline

When the upgrade of an element in the IMS network is not applicable then the upgrade of this element can be skipped.

End to end software upgrade process diagram

The end to end software upgrade process diagram:



End to end software upgrade process

The end-to-end software upgrade consists of the following stages:

- 1 If VitalSuite products software is required follow the process in :
[“Software upgrade flow for VitalSuite products” \(p. 2-13\)](#)
- 2 If eSM product software is required follow the process in :
[“Software upgrade flow for eSM element” \(p. 2-16\)](#)
- 3 If OMC-H products software is required follow the process in :
[“Software upgrade flow for OMC-H and managed related elements” \(p. 2-18\)](#)
- 4 If SDHLS and Datagrid software are required follow the process in :
[“Software upgrade flow for Lucent SDHLS and Datagrid” \(p. 2-20\)](#)
- 5 If OMC-CN products software is required follow the process in :
[“Software upgrade flow for OMC-CN” \(p. 2-22\)](#)
- 6 If SurePay CCF products software is required follow the process in :
[“Software upgrade flow for MiLife SurePay CCF elements” \(p. 2-24\)](#)
- 7 If OMC-P products software is required follow the process in :
[“Software upgrade flow for OMC-P” \(p. 2-26\)](#)
- 8 If LCM products software is required follow the process in :
[“Software upgrade flow for Lucent CM elements” \(p. 2-28\)](#)
- 9 If Lucent GP related software upgrade is required follow the process in:
[“Software upgrade flow for Lucent Gateway Platform elements” \(p. 2-30\)](#)
- 10 If AudioCodes products software is required follow the process in:
[“Software upgrade flow for AudioCodes elements” \(p. 2-33\)](#)

.....
11 If *AnyPath*® Messaging System products software upgrade is required follow the process in:

“Software upgrade flow for AnyPath Messaging System elements” (p. 2-35)

.....

12 If Lucent CP related software upgrade is required follow the process in:

“Software upgrade flow for the Lucent Control Platform” (p. 2-37)

.....

13 If Lucent Feature Server 3000 products software is required follow the process in :

“Software upgrade flow for Lucent FS3000 elements” (p. 2-41)

.....

14 If *MiLife*® Application Server related products software upgrade is required follow the process in:

“Software upgrade flow for MiLife Application Server supported elements” (p. 2-43)

.....

15 IMS network system verification tests



Software upgrade flow for VitalSuite products

Purpose

This topic describes the process to perform an end to end software upgrade for *VitalSuite*® products.

The upgrade steps listed are for the following products:

- *VitalQIP*® DNS and ENUM
- *VitalSuite*® Integrated Service Assurance Software
- *VitalSuite*® Network Trouble Patterning Software
- *VitalSuite*® Voice Activation Manager Software
- *VitalSuite*® Services Activation Manager Software

Before you begin

Before you begin the software upgrade of this element in the IMS network, make backups or ensure you have recent backups available.

Refer to the *IMS Solution Release Notes* of the IMS network for requirements that are specific for the upgrade procedure for the IMS network.

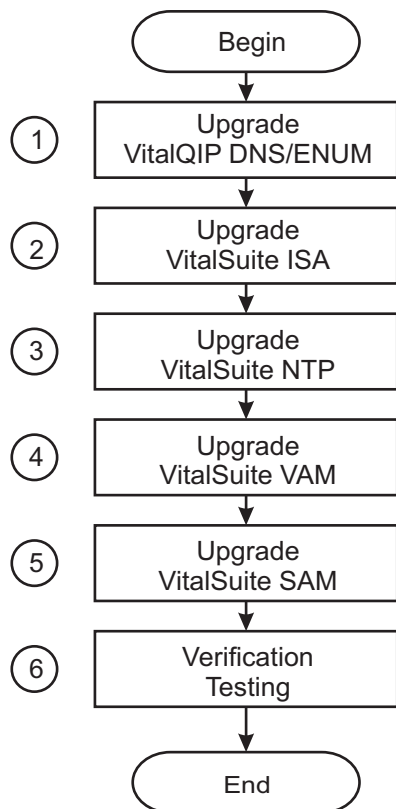
Refer to the *documentation set* and the *Release Notes* of the network element for requirements that are specific for the upgrade procedure for that network element.

Guideline

When the upgrade of an element in the IMS network is not applicable then the upgrade of this element can be skipped.

VitalSuite software upgrade process diagram

The VitalSuite software upgrade process diagram:



VitalSuite software upgrade process

The software upgrade consists of the following stages:

- 1 Upgrade the *VitalQIP*[®] DNS and ENUM IP address management software.

Reference: Refer to the **OLCS documentation section** (<https://support.lucent.com/portal/olcsHome.do>):

- *ENUM Manager User Guide*, 190-409-067

Chapter: Installing ENUM Manager.

- 2 Upgrade the *VitalSuite*[®] Integrated Service Assurance Software.

Reference: Refer to the [OLCS documentation section \(https://support.lucent.com/portal/olcsHome.do\)](https://support.lucent.com/portal/olcsHome.do):

- *VitalSuite® Software Integrated Service Assurance and Network Fault Management Upgrade Guide for a SUN Computer*, 190-422-802
Chapter: Application Upgrade on a Sun Computer
- *VitalSuite® Software Integrated Service Assurance and Network Fault Management Upgrade Guide for an HP Computer*, 190-422-804
Chapter: Application Upgrade on an HP Computer
- *VitalSuite® Software Integrated Service Assurance and Network Fault Management Installation Guide*, 190-422-801
Chapter: Install the VitalSuite ISA Application Software

3 Upgrade the *VitalSuite®* Network Trouble Patterning Software.

Reference: Refer to the [OLCS documentation section \(https://support.lucent.com/portal/olcsHome.do\)](https://support.lucent.com/portal/olcsHome.do):

- *VitalSuite® Software Network Trouble Patterning Installation Guide*, 190-405-575
Chapter: Overview.

4 Upgrade the *VitalSuite®* Voice Activation Manager Software.

Reference: Refer to the [OLCS documentation section \(https://support.lucent.com/portal/olcsHome.do\)](https://support.lucent.com/portal/olcsHome.do):

- *Navis Voice Activation Manager Operations, Administration and Maintenance Guide*, 365-370-328
Chapter: Sytem Operations - Software Upgrades.
- *Navis Voice Activation Manager System Administration (International) Guide*, 365-370-327

5 Upgrade the *VitalSuite®* Services Activation Manager Software.

Reference: Refer to the [OLCS documentation section \(https://support.lucent.com/portal/olcsHome.do\)](https://support.lucent.com/portal/olcsHome.do):

- *VitalQIP Workflow Manager, Installation Guide*, 109-409-064

6 To verify successful update consider the following:

- Interactions between the Lucent *VitalSuite®* Software products and other NEs

□

Software upgrade flow for eSM element

Purpose

This topic describes the process to perform an end to end software upgrade for the eSM element.

Before you begin

Before you begin the software upgrade of this element in the IMS network, make backups or ensure you have recent backups available.

Refer to the *IMS Solution Release Notes* of the IMS network for requirements that are specific for the upgrade procedure for the IMS network.

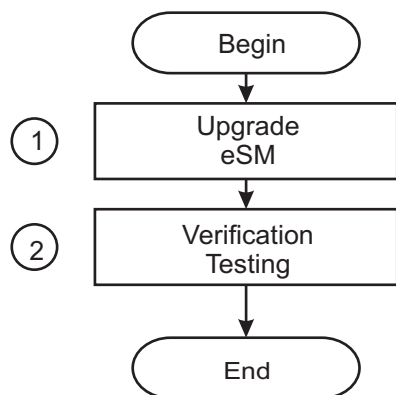
Refer to the *documentation set* and the *Release Notes* of the network element for requirements that are specific for the upgrade procedure for that network element.

Guideline

When the upgrade of an element in the IMS network is not applicable then the upgrade of this element can be skipped.

eSM software upgrade process diagram

The eSM software upgrade process diagram:



eSM software upgrade process

The software upgrade consists of the following stages:

- 1 Upgrade the eSM.

Reference: Refer to the [OLCS documentation section \(https://support.lucent.com/portal/olcsHome.do\)](https://support.lucent.com/portal/olcsHome.do):

- *Intelligent Network (IN) Enhanced Services Manager (ESM) Service Version Management (SVM), 270-720-343*

Chapter: Service Version Management (SVM) Tasks.

2 To verify successful update consider the following:

- Interactions between the eSM and other NEs



Software upgrade flow for OMC-H and managed related elements

Purpose

This topic describes the process to perform an end to end software upgrade for OMC-H elements.

The upgrade steps listed are for the following products:

- OMC-H

Before you begin

Before you begin the software upgrade of this element in the IMS network, make backups or ensure you have recent backups available.

Refer to the *IMS Solution Release Notes* of the IMS network for requirements that are specific for the upgrade procedure for the IMS network.

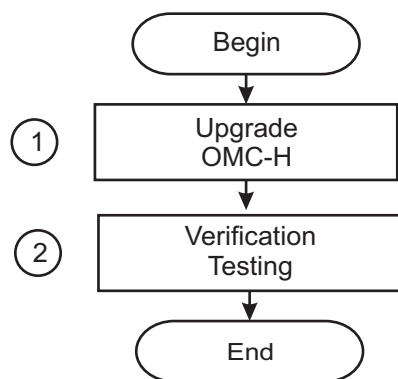
Refer to the *documentation set* and the *Release Notes* of the network element for requirements that are specific for the upgrade procedure for that network element.

Guideline

When the upgrade of an element in the IMS network is not applicable then the upgrade of this element can be skipped.

OMC-H software upgrade process diagram

The OMC-H software upgrade process diagram:



OMC-H software upgrade process

The software upgrade consists of the following stages:

1 Upgrade the OMC-H software.

Reference: Refer to the [OLCS documentation section \(https://support.lucent.com/portal/olcsHome.do\)](https://support.lucent.com/portal/olcsHome.do):

- *OMC-H System Installation*, 401-380-084
Part: Installation of a Whole OMC System, Chapter: Upgrade of Lucent OMC-H.
- *OMC-H Configuration Management*, 401-380-078 **Chapter: Upgrade of Lucent OMC-H.**

2 To verify successful update consider the following:

- Interactions between the OMC-H and other NEs
- Setup end to end IMS session scenarios (UE-UE, UE-PSTN, PSTN-UE)



Software upgrade flow for Lucent SDHLS and *Datagrid*

Purpose

This topic describes the process to perform an end to end software upgrade Lucent SDHLS and *Datagrid*

The upgrade steps listed are for the following products:

- Lucent Datagrid
- Lucent SDHLR

Before you begin

Before you begin the software upgrade of this element in the IMS network, make backups or ensure you have recent backups available.

Refer to the *IMS Solution Release Notes* of the IMS network for requirements that are specific for the upgrade procedure for the IMS network.

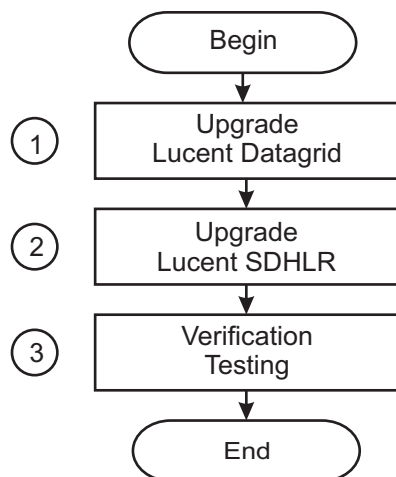
Refer to the *documentation set* and the *Release Notes* of the network element for requirements that are specific for the upgrade procedure for that network element.

Guideline

When the upgrade of an element in the IMS network is not applicable then the upgrade of this element can be skipped.

OMC-H software upgrade process diagram

The Lucent SDHLS and *Datagrid* software upgrade process diagram:



OMC-H software upgrade process

The software upgrade consists of the following stages:

1 Upgrade the Lucent Datagrid software.

Reference: Refer to the [OLCS documentation section \(https://support.lucent.com/portal/olcsHome.do\)](https://support.lucent.com/portal/olcsHome.do):

- *MiLife® Application Server (MAS) Services Administration Guide, 275-710-652*
Chapter: Updating a service package application.
 - *MiLife® Application Server/Enhanced Control Server Release LE Retrofit Procedures, 275-700-651*
Chapter: Implementing retrofit.
 - *Intelligent Network (IN) MiLife® Application Server (MAS) Customer Software Installation Guide, 275-700-175*
Chapter: MAS Platform Release and Tools Installation: New Install.
-

2 Upgrade the Lucent SDHLR software.

Reference: Refer to the [OLCS documentation section \(https://support.lucent.com/portal/olcsHome.do\)](https://support.lucent.com/portal/olcsHome.do):

- *MiLife® Application Server (MAS) Services Administration Guide, 275-710-652*
Chapter: Updating a service package application.
 - *MiLife® Application Server/Enhanced Control Server Release LE Retrofit Procedures, 275-700-651*
Chapter: Implementing retrofit.
 - *Intelligent Network (IN) MiLife® Application Server (MAS) Customer Software Installation Guide, 275-700-175*
Chapter: MAS Platform Release and Tools Installation: New Install.
-

3 To verify successful update consider the following:

- Interactions between the *Lucent Datagrid* and other NEs
- Interactions between the Lucent SDHLR and other NEs
- Setup end to end IMS session scenarios (UE-UE, UE-PSTN, PSTN-UE)

□

Software upgrade flow for OMC-CN

Purpose

This topic describes the process to perform an end to end software upgrade for OMC-CN.

Before you begin

Before you begin the software upgrade of this element in the IMS network, make backups or ensure you have recent backups available.

Refer to the *IMS Solution Release Notes* of the IMS network for requirements that are specific for the upgrade procedure for the IMS network.

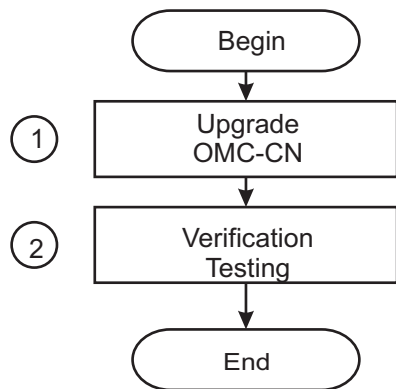
Refer to the *documentation set* and the *Release Notes* of the network element for requirements that are specific for the upgrade procedure for that network element.

Guideline

When the upgrade of an element in the IMS network is not applicable then the upgrade of this element can be skipped.

OMC-CN software upgrade process diagram

The OMC-CN software upgrade process diagram:



OMC-CN software upgrade process

The software upgrade consists of the following stages:

- 1 Upgrade the OMC-CN software.

Reference: Refer to the [OLCS documentation section \(https://support.lucent.com/portal/olcsHome.do\)](https://support.lucent.com/portal/olcsHome.do):

- *OMC-CN System Installation*, 401-380-816
Chapter: Upgrade of Lucent OMC-CN.

-
- 2** To verify successful update consider the following:
- Interactions between the OMC-CN and other NEs



Software upgrade flow for MiLife SurePay CCF elements

Purpose

This topic describes the process to perform an end to end software upgrade for *MiLife*[®] *SurePay*[®] CCF elements.

Before you begin

Before you begin the software upgrade of this element in the IMS network, make backups or ensure you have recent backups available.

Refer to the *IMS Solution Release Notes* of the IMS network for requirements that are specific for the upgrade procedure for the IMS network.

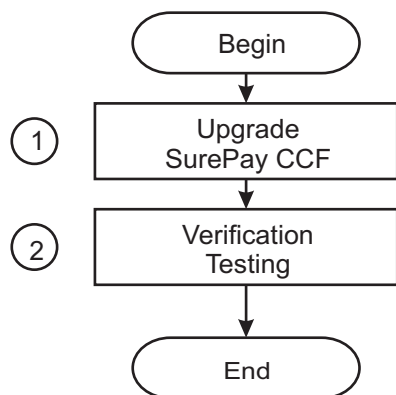
Refer to the *documentation set* and the *Release Notes* of the network element for requirements that are specific for the upgrade procedure for that network element.

Guideline

When the upgrade of an element in the IMS network is not applicable then the upgrade of this element can be skipped.

MiLife[®] *SurePay*[®] CCF software upgrade process diagram

The *MiLife*[®] *SurePay*[®] CCF software upgrade process diagram:



MiLife[®] *SurePay*[®] CCF software upgrade process

The software upgrade consists of the following stages:

- 1 Upgrade the *MiLife*[®] *SurePay*[®] CCF

Reference: Refer to the [OLCS documentation section \(https://support.lucent.com/portal/olcsHome.do\)](https://support.lucent.com/portal/olcsHome.do):

- MiLife® *Application Server Services Administration Guide, 275-710-652*
Chapter: Updating a service package application.
 - MiLife® *Application Server/Enhanced Control Server Release LE Retrofit Procedures, 275-700-651*
Chapter: Implementing retrofit.
 - MiLife® SurePay® *CCF OA&M manual, 270-725-058*
Chapter: Installing the SurePay® Charging Collection Function (CCF) SPA.
-

2 To verify successful update consider the following:

- Interactions between the *MiLife® SurePay®* CCF and other NEs
- Setup end to end IMS session scenarios (UE-UE, UE-PSTN, PSTN-UE)



Software upgrade flow for OMC-P

Purpose

This topic describes the process to perform an end to end software upgrade for OMC-P.

Before you begin

Before you begin the software upgrade of this element in the IMS network, make backups or ensure you have recent backups available.

Refer to the *IMS Solution Release Notes* of the IMS network for requirements that are specific for the upgrade procedure for the IMS network.

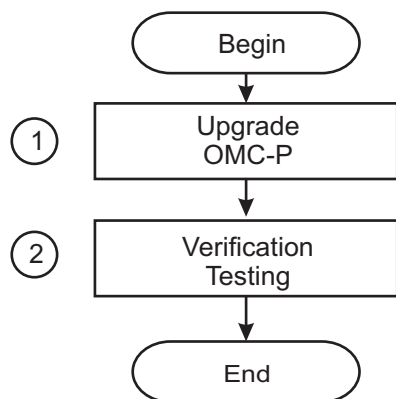
Refer to the *documentation set* and the *Release Notes* of the network element for requirements that are specific for the upgrade procedure for that network element.

Guideline

When the upgrade of an element in the IMS network is not applicable then the upgrade of this element can be skipped.

OMC-P software upgrade process diagram

The OMC-P software upgrade process diagram:



OMC-P software upgrade process

The software upgrade consists of the following stages:

- 1 Upgrade the OMC-P.

Reference: Refer to the [OLCS documentation section \(https://support.lucent.com/portal/olcsHome.do\)](https://support.lucent.com/portal/olcsHome.do):

- *Lucent Control and Gateway Platform Element Management System (PlexView EMS) Installation Guide for the Lucent Gateway Platform, 255-400-401*
Chapter: Installing Oracle and Installing or Upgrading EMS.
-

- 2** To verify successful update consider the following:
- Interactions between the OMC-P and other NEs



Software upgrade flow for Lucent CM elements

Purpose

This topic describes the process to perform an end to end software upgrade for Lucent Communication Manager (Lucent CM) elements.

Before you begin

Before you begin the software upgrade of this element in the IMS network, make backups or ensure you have recent backups available.

Refer to the *IMS Solution Release Notes* of the IMS network for requirements that are specific for the upgrade procedure for the IMS network.

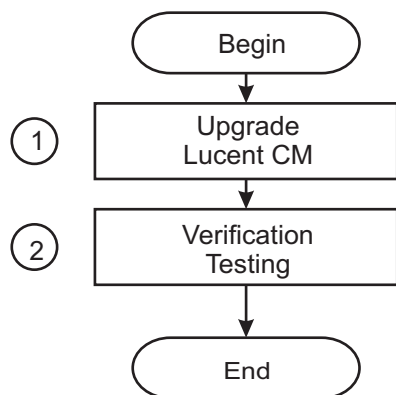
Refer to the *documentation set* and the *Release Notes* of the network element for requirements that are specific for the upgrade procedure for that network element.

Guideline

When the upgrade of an element in the IMS network is not applicable then the upgrade of this element can be skipped.

Lucent CM software upgrade process diagram

The Lucent CM software upgrade process diagram:



Lucent CM software upgrade process

The software upgrade consists of the following stages:

- 1 Upgrade the software on the Lucent Communication Manager nodes.

For a multi node Lucent CM system, a software upgrade will upgrade the software on all application nodes, database nodes and universal nodes.

Reference: Refer to the [OLCS documentation section \(https://support.lucent.com/portal/olcsHome.do\)](https://support.lucent.com/portal/olcsHome.do):

- *Lucent Communication Manager Administration Guide*, 255-490-001
Chapter: Configuration management - Software.
-

2 To verify a successful update consider the following:

- Interactions between the Lucent Communication Manager and other NEs
- Start up and log in to the Lucent Communication Manager with the Lucent CM Explorer administration client.
- Start up and log in to the Lucent Communication Manager with the Lucent CM user client.
- Set up calls and perform configuration actions with the Lucent CM user client.

□

Software upgrade flow for Lucent Gateway Platform elements

Purpose

This topic describes the process to perform an end to end software upgrade for Lucent Gateway Platform.

The upgrade steps listed are for the following products:

- BTS
- Lucent Gateway Platform - Lucent Signaling Gateway
Lucent Gateway Platform - Lucent Network Controller
- Lucent Gateway Platform - Lucent Network Gateway

Before you begin

Before you begin the software upgrade of this element in the IMS network, make backups or ensure you have recent backups available.

Refer to the *IMS Solution Release Notes* of the IMS network for requirements that are specific for the upgrade procedure for the IMS network.

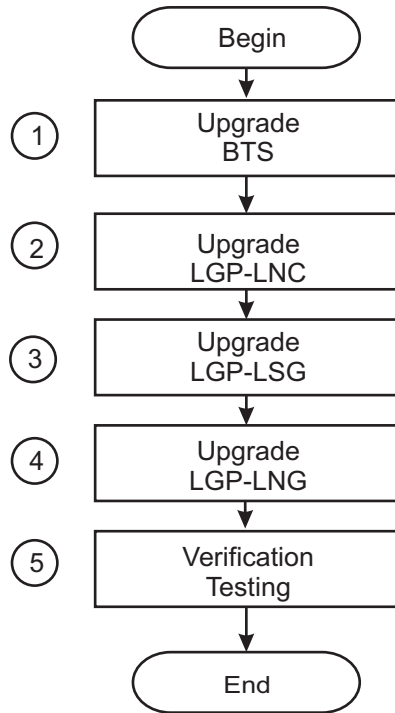
Refer to the *documentation set* and the *Release Notes* of the network element for requirements that are specific for the upgrade procedure for that network element.

Guideline

When the upgrade of an element in the IMS network is not applicable then the upgrade of this element can be skipped.

Lucent GP software upgrade process diagram

The Lucent GP software upgrade process diagram:



Lucent GP software upgrade process

The software upgrade consists of the following stages:

1 Upgrade the BTS.

Reference: Refer to the [OLCS documentation section \(https://support.lucent.com/portal/olcsHome.do\)](https://support.lucent.com/portal/olcsHome.do):

- *Lucent Gateway Platform PlexView™ Advanced Traffic Collection for the Advanced Reporting System Installation & Setup Guide, 255-400-202*

Chapter: Prepare and Install or Upgrade the Advanced Traffic Collector.

2 Upgrade the Lucent Signaling Gateway.

Reference: Refer to the [OLCS documentation section \(https://support.lucent.com/portal/olcsHome.do\)](https://support.lucent.com/portal/olcsHome.do):

- *Lucent Gateway Platform Switch Software Change procedures, 255-400-013*

Part: Task Index List; Chapter: Upgrading a Lucent Signaling Gateway.

3 Upgrade the Lucent Network Controller.

Reference: Refer to the [OLCS documentation section \(https://support.lucent.com/portal/olcsHome.do\)](https://support.lucent.com/portal/olcsHome.do):

- *Lucent Gateway Platform Switch Software Change procedures, 255-400-013*
Part: Task Index List; Chapter: Upgrading a Lucent Network Controller.
-

4 Upgrade the Lucent Network Gateway.

Reference: Refer to the [OLCS documentation section \(https://support.lucent.com/portal/olcsHome.do\)](https://support.lucent.com/portal/olcsHome.do):

- *Lucent Gateway Platform Switch Software Change procedures, 255-400-013*
Part: Task Index List; Chapter: Upgrading a Lucent Network Gateway.
-

5 To verify successful update consider the following:

- Interactions between the Lucent Gateway Platform and other NEs
- Setup end to end IMS session scenarios (UE-UE, UE-PSTN, PSTN-UE)



Software upgrade flow for AudioCodes elements

Purpose

This topic describes the process to perform an end to end software upgrade for AudioCodes elements.

The upgrade steps listed are for the following products:

- AudioCodes MRF EMS
- AudioCodes MRF

Before you begin

Before you begin the software upgrade of this element in the IMS network, make backups or ensure you have recent backups available.

Refer to the *IMS Solution Release Notes* of the IMS network for requirements that are specific for the upgrade procedure for the IMS network.

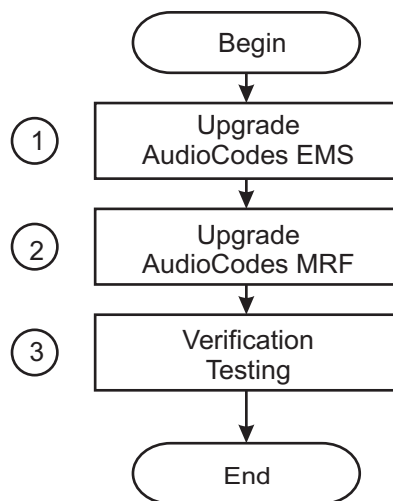
Refer to the *documentation set* and the *Release Notes* of the network element for requirements that are specific for the upgrade procedure for that network element.

Guideline

When the upgrade of an element in the IMS network is not applicable then the upgrade of this element can be skipped.

AudioCodes software upgrade process diagram

The AudioCodes software upgrade process diagram:



AudioCodes software upgrade process

The software upgrade consists of the following stages:

1 Upgrade the AudioCodes EMS.

Reference: Refer to the [OLCS documentation section \(https://support.lucent.com/portal/olcsHome.do\)](https://support.lucent.com/portal/olcsHome.do):

- *EMS User's Manual*, LTRT-91005
Chapter: Gateway Installation, Software Update and regional files distribution.
-

2 Upgrade the AudioCodes IPmedia 2000.

Reference: Refer to the [OLCS documentation section \(https://support.lucent.com/portal/olcsHome.do\)](https://support.lucent.com/portal/olcsHome.do):

- *IP2000&IPM Series User Manual*, LTRT-73202
Chapter: Upgrading the IPmedia 2000
 - *IPM 1610 User Manual*, LTRT-58803
Chapter: Upgrading the IPM-1610 software
 - *EMS User's Manual*, LTRT-91005
Chapter: Gateway Installation, Software Update and regional files distribution.
-

3 To verify successful update consider the following:

- Interactions between the AudioCodes media server and other NEs
- Setup end to end IMS session scenarios (UE-UE, UE-PSTN, PSTN-UE)



Software upgrade flow for AnyPath Messaging System elements

Purpose

This topic describes the process to perform an end to end software upgrade for *AnyPath*® Messaging System elements.

Before you begin

Before you begin the software upgrade of this element in the IMS network, make backups or ensure you have recent backups available.

Refer to the *IMS Solution Release Notes* of the IMS network for requirements that are specific for the upgrade procedure for the IMS network.

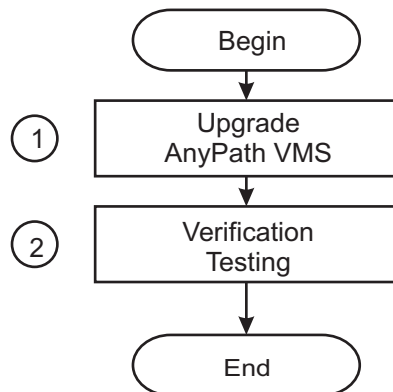
Refer to the *documentation set* and the *Release Notes* of the network element for requirements that are specific for the upgrade procedure for that network element.

Guideline

When the upgrade of an element in the IMS network is not applicable then the upgrade of this element can be skipped.

AnyPath® Messaging System software upgrade process diagram

The *AnyPath*® Messaging System software upgrade process diagram:



AnyPath® Messaging System software upgrade process

The software upgrade consists of the following stages:

- 1 Upgrade the *AnyPath*® Messaging System.

Reference: Refer to the [OLCS documentation section \(https://support.lucent.com/portal/olcsHome.do\)](https://support.lucent.com/portal/olcsHome.do):

- *AnyPath Software Patch Notification & Installation Procedure*
-

2 To verify successful update consider the following:

- Interactions between the *AnyPath*[®] Messaging System and other NEs
- Setup end to end IMS session scenarios (UE-UE, UE-PSTN, PSTN-UE)



Software upgrade flow for the Lucent Control Platform

Purpose

This topic describes the process to perform an end to end software upgrade for the Lucent Control Platform.

The upgrade steps listed are for the following products:

- Lucent Control Platform and its applications:
 - Lucent Network Controller
 - Lucent Session Manager
 - Lucent Service Broker
 - Lucent FS 2500
 - Lucent FS 5000
- Lucent MRS
Note : The Lucent MRS is not part of the Lucent Control Platform but discussed here because it interfaces with the MI-Agent.

Before you begin

Before you begin the software upgrade of this element in the IMS network, make backups or ensure you have recent backups available.

Refer to the *IMS Solution Release Notes* of the IMS network for requirements that are specific for the upgrade procedure for the IMS network.

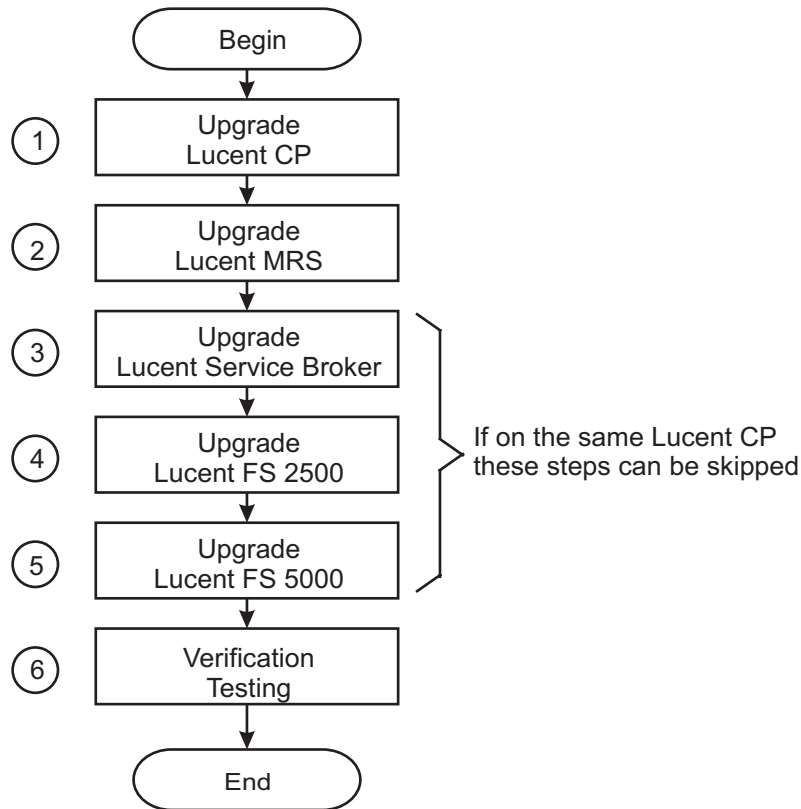
Refer to the *documentation set* and the *Release Notes* of the network element for requirements that are specific for the upgrade procedure for that network element.

Guideline

When the upgrade of an element in the IMS network is not applicable then the upgrade of this element can be skipped.

Lucent CP software upgrade process diagram

The Lucent CP software upgrade process diagram:



Lucent CP software upgrade process

The software upgrade consists of the following stages:

- 1 Upgrade the Lucent Control Platform. This includes the MI-Agent, Lucent Network Controller, Lucent Session Manager (including Service Broker), FS 2500 and FS 5000.

Reference: Refer to the [OLCS documentation section \(https://support.lucent.com/portal/olcsHome.do\)](https://support.lucent.com/portal/olcsHome.do):

- *Lucent Control Platform Lucent NC, Lucent SM, Lucent FS 2500 and Lucent FS 5000 OAM&P manual, 275-900-360*

Part: Configuration Management - Lucent CP; Chapter: Manage software - Software update.

- 2 Upgrade the Lucent MRS.

Reference: Refer to the [OLCS documentation section \(https://support.lucent.com/portal/olcsHome.do\)](https://support.lucent.com/portal/olcsHome.do):

- *Enhanced Media Resource Server System Operations and Administration manual, 270-780-411*

Part: SPA and voice management; Chapter - Updating a service package application

3 Upgrade the Lucent Service Broker.

Important! This step can be skipped if the Lucent Service Broker runs on the same Lucent CP as the Lucent SM.

Reference: Refer to the [OLCS documentation section \(https://support.lucent.com/portal/olcsHome.do\)](https://support.lucent.com/portal/olcsHome.do):

- *Lucent Control Platform Lucent NC, Lucent SM, Lucent FS 2500 and Lucent FS 5000 OAM&P manual, 275-900-360*

Part: Configuration Management - Lucent CP; Chapter: Manage software - Software update.

4 Upgrade the Lucent Feature Server 2500 (MMAS and HOAS/AXAS).

Important! This step can be skipped if the FS 2500 runs on the same Lucent CP as the Lucent SM.

Reference: Refer to the [OLCS documentation section \(https://support.lucent.com/portal/olcsHome.do\)](https://support.lucent.com/portal/olcsHome.do):

- *Lucent Control Platform Lucent NC, Lucent SM, Lucent FS 2500 and Lucent FS 5000 OAM&P manual, 275-900-360*

Part: Configuration Management - Lucent CP; Chapter: Manage software - Software update.

5 Upgrade the Lucent Feature Server 5000.

Important! This step can be skipped if the FS 5000 runs on the same Lucent CP as the Lucent SM.

Reference: Refer to the [OLCS documentation section \(https://support.lucent.com/portal/olcsHome.do\)](https://support.lucent.com/portal/olcsHome.do):

- *Lucent Control Platform Lucent NC, Lucent SM, Lucent FS 2500 and Lucent FS 5000 OAM&P manual, 275-900-360*

Part: Configuration Management - Lucent CP; Chapter: Manage software - Software update.

-
- 6** To verify successful update consider the following:
- Interactions between the Lucent Control Platform and other NEs
 - Interactions between the Lucent MRS and other NEs
 - Setup end to end IMS session scenarios (UE-UE, UE-PSTN, PSTN-UE)



Software upgrade flow for Lucent FS3000 elements

Purpose

This topic describes the process to perform an end to end software upgrade for Lucent Feature Server 3000 elements.

The upgrade steps listed are for the following products:

- Lucent Feature Server 3000 EMS
- Lucent Feature Server 3000 NE

Before you begin

Before you begin the software upgrade of this element in the IMS network, make backups or ensure you have recent backups available.

Refer to the *IMS Solution Release Notes* of the IMS network for requirements that are specific for the upgrade procedure for the IMS network.

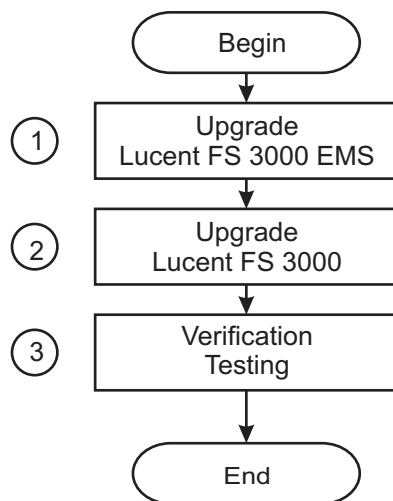
Refer to the *documentation set* and the *Release Notes* of the network element for requirements that are specific for the upgrade procedure for that network element.

Guideline

When the upgrade of an element in the IMS network is not applicable then the upgrade of this element can be skipped.

Lucent FS3000 software upgrade process diagram

The Lucent FS3000 software upgrade process diagram:



Lucent FS3000 software upgrade process

The software upgrade consists of the following stages:

1 Upgrade the Lucent Feature Server 3000 EMS.

Reference: Refer to the [OLCS documentation section \(https://support.lucent.com/portal/olcsHome.do\)](https://support.lucent.com/portal/olcsHome.do):

- Installation & Maintenance: *BroadWorks Software Management Guide Release, 03-BD5000-00*

Chapter: BroadWorks Upgrade Procedure.

2 Upgrade the Lucent Feature Server 3000.

Reference: Refer to the [OLCS documentation section \(https://support.lucent.com/portal/olcsHome.do\)](https://support.lucent.com/portal/olcsHome.do):

- Installation & Maintenance: *BroadWorks Software Management Guide Release, 03-BD5000-00*

Chapter: BroadWorks Upgrade Procedure.

3 To verify successful update consider the following:

- Interactions between the Lucent Feature Server 3000 and other NEs
- Setup end to end IMS session scenarios (UE-UE, UE-PSTN, PSTN-UE)



Software upgrade flow for MiLife Application Server supported elements

Purpose

This topic describes the process to perform an end to end software upgrade for *MiLife*[®] Application Server supported elements.

The upgrade steps listed are for the following products:

- *MiLife*[®] Intelligent Services Gateway
- *MiLife*[®] Presence Solution
- Lucent Active PhoneBook
- *MiLife*[®] iLocator

Before you begin

Before you begin the software upgrade of this element in the IMS network, make backups or ensure you have recent backups available.

Refer to the *IMS Solution Release Notes* of the IMS network for requirements that are specific for the upgrade procedure for the IMS network.

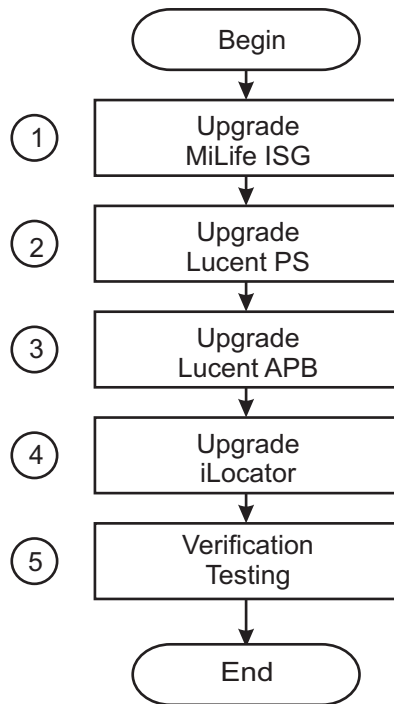
Refer to the *documentation set* and the *Release Notes* of the network element for requirements that are specific for the upgrade procedure for that network element.

Guideline

When the upgrade of an element in the IMS network is not applicable then the upgrade of this element can be skipped.

***MiLife*[®] Application Server software upgrade process diagram**

The *MiLife*[®] Application Server software upgrade process diagram:



MiLife® Application Server software upgrade process

The software upgrade consists of the following stages:

1 Upgrade the *MiLife®* Intelligent Services Gateway

Reference: [OLCS documentation section \(https://support.lucent.com/portal/olcsHome.do\)](https://support.lucent.com/portal/olcsHome.do):

- Refer to the *MiLife® Application Server (MAS) Services Administration Guide*, 275-710-652
Chapter: Updating a service package application,
 - *MiLife® Application Server/Enhanced Control Server Release LE Retrofit Procedures*, 275-700-651
Chapter: Implementing retrofit
-

2 Upgrade the *MiLife®* Presence Solution

Reference: [OLCS documentation section \(https://support.lucent.com/portal/olcsHome.do\)](https://support.lucent.com/portal/olcsHome.do):

- *MiLife® Application Server (MAS) Services Administration Guide, 275-710-652*
Chapter: Updating a service package application
 - *MiLife® Application Server/Enhanced Control Server Release LE Retrofit Procedures, 275-700-651*
Chapter: Implementing retrofit
-

3 Upgrade the Lucent Active PhoneBook

Reference: Refer to the [OLCS documentation section \(https://support.lucent.com/portal/olcsHome.do\)](https://support.lucent.com/portal/olcsHome.do):

- *MiLife® Application Server (MAS) Services Administration Guide, 275-710-652*
Chapter: Updating a service package application,
 - *MiLife® Application Server/Enhanced Control Server Release LE Retrofit Procedures, 275-700-651*
Chapter: Implementing retrofit
-

4 Upgrade the *MiLife®* iLocator

Reference: Refer to the [OLCS documentation section \(https://support.lucent.com/portal/olcsHome.do\)](https://support.lucent.com/portal/olcsHome.do):

- *MiLife® Application Server (MAS) Services Administration Guide, 275-710-652*
Chapter: Updating a service package application
 - *MiLife® Application Server/Enhanced Control Server Release LE Retrofit Procedures, 275-700-651*
Chapter: Implementing retrofit
-

5 To verify successful update consider the following:

- Interactions between the *MiLife®* Application Server and other NEs
- Setup end to end IMS session scenarios (UE-UE, UE-PSTN, PSTN-UE)



Parallel upgrade process flows

Overview

Purpose

This section describes task flows and references to perform parallel software upgrade in IMS.

Contents

Parallel software upgrade flow for the IMS solution	2-47
Software upgrade flow for VitalSuite products	2-50
Software upgrade flow for EMS/Portal products	2-53
Software upgrade flow for NE/AS products	2-57
Software upgrade flow for Lucent CP products	2-61
Software upgrade flow for Application Servers	2-64



Parallel software upgrade flow for the IMS solution

Purpose

This topic describes the process to perform an end to end software upgrade for IMS.

The process describes the order in which the IMS network element must be upgraded and provides references to upgrade procedures of the network elements.

Basic order of software upgrade

The software upgrade follows the following order:

1. Upgrade Vital Suite products
2. Upgrade EMS/Portal products
3. Upgrade NE/AS products
4. Upgrade LCP products
5. Upgrade Application Servers

Important! The Ethernet routers and Session Border Controllers are not part of the parallel software upgrade approach and should be upgraded 1-2 weeks in advance.

Upgrade of additional or optional network elements

Process stages for network elements that are not part of your IMS network can be skipped.

Check the Release Notes for the *NEW* software release to verify if additional or optional network elements also require software upgrades

Software upgrade failure

If a software upgrade for a network element fails, perform a software back out

Refer to the documentation set of the network element for information about how to act in case of a software upgrade failure.

Before you begin

Before you begin the end to end software upgrade of the IMS network, make backups or ensure you have recent backups available.

Refer to the *IMS Solution Release Notes* of the IMS network for requirements that are specific for the upgrade procedure for the IMS network.

Refer to the *documentation set* and the *Release Notes* of the network element for requirements that are specific for the upgrade procedure for that network element.

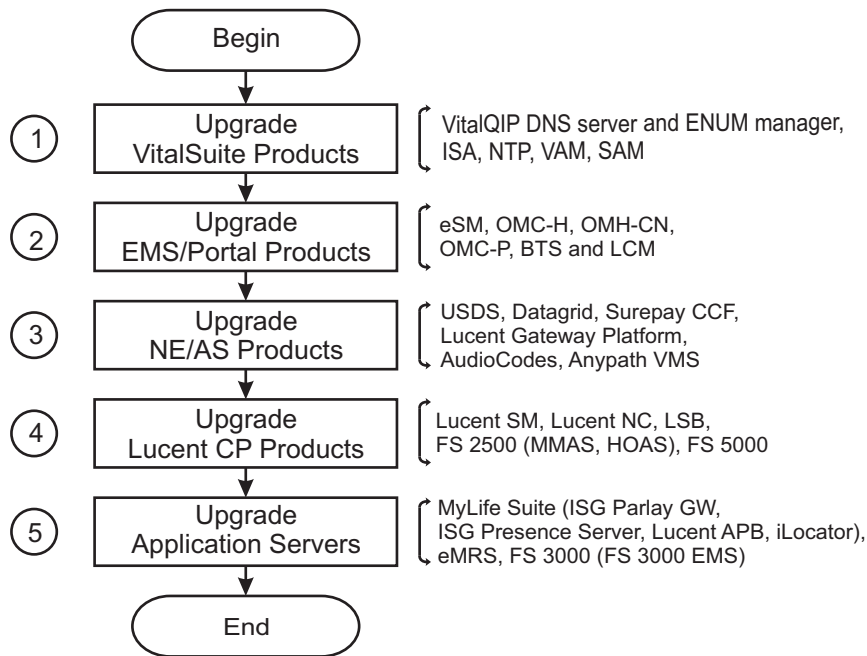
Guideline

When the upgrade of an element in the IMS network is not applicable then the upgrade of this element can be skipped.

Important! Elements in each of the following groupings can be upgraded at the same time. *HOWEVER* all of the elements in a grouping *MUST* be completed before moving to the next grouping.

End to end parallel software upgrade process diagram

The end to end parallel software upgrade process diagram:



End to end software upgrade process

The end-to-end software upgrade consists of the following stages:

- 1 If VitalSuite products (VitalQIP DNS server and ENUM manager, ISA, NTP, VAM, SAM) software upgrade is required follow the process in :

[“Software upgrade flow for VitalSuite products” \(p. 2-50\)](#)

- 2 If EMS/Portal products (eSM, OMC-H, OMC-CN, OMC-P BTS and LCM) software upgrade is required follow the process in :

[“Software upgrade flow for EMS/Portal products” \(p. 2-53\)](#)

-
- 3 If NE/AS products (USDS, Datagrid, Surepay CCF, Lucent Gateway Platform, AudioCodes, Anypath) software upgrade is required follow the process in :
“Software upgrade flow for Lucent CP products” (p. 2-61)

.....

 - 4 If LCP (LSM, LNC, LSB, FS2500 (MMAS, HOAS), FS5000) products software upgrade is required follow the process in :
“Software upgrade flow for Lucent CP products” (p. 2-61)

.....

 - 5 If Applications Servers (MyLife Suite (ISG Parlay GW, Presence Server, Lucent ABP, iLocator), eMRS, FS3000) products software upgrade is required follow the process in :
“Software upgrade flow for Application Servers ” (p. 2-64)



Software upgrade flow for VitalSuite products

Purpose

This topic describes the process to perform an end to end parallel software upgrade for *VitalSuite*[®] products.

The upgrade steps listed are for the following products:

- *VitalQIP*[®] DNS and ENUM
- *VitalSuite*[®] Integrated Service Assurance Software
- *VitalSuite*[®] Network Trouble Patterning Software
- *VitalSuite*[®] Voice Activation Manager Software
- *VitalSuite*[®] Services Activation Manager Software

Before you begin

Before you begin the software upgrade of this element in the IMS network, make backups or ensure you have recent backups available.

Refer to the *IMS Solution Release Notes* of the IMS network for requirements that are specific for the upgrade procedure for the IMS network.

Refer to the *documentation set* and the *Release Notes* of the network element for requirements that are specific for the upgrade procedure for that network element.

Guideline

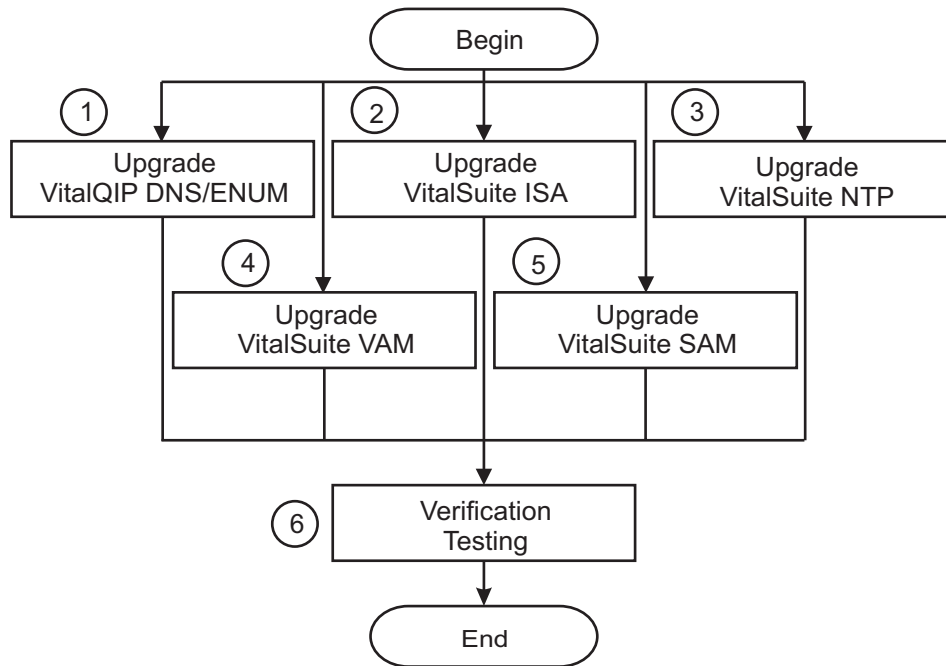
When the upgrade of an element in the IMS network is not applicable then the upgrade of this element can be skipped.

Important! Elements in this grouping can be upgraded at the same time. *HOWEVER* all of the elements in a grouping *MUST* be completed before moving to the next grouping.

Important! Note that the numbers in the following figure do not indicate an order but signify the associated reference.

VitalSuite software upgrade process diagram

The VitalSuite software upgrade process diagram:



VitalSuite software upgrade process

The software upgrade consists of the following stages:

-
- 1 Upgrade the *VitalQIP*[®] DNS and ENUM IP address management software.
Reference: Refer to the [OLCS documentation section \(https://support.lucent.com/portal/olcsHome.do\)](https://support.lucent.com/portal/olcsHome.do):
 - *VitalQIP Release Notes*
Chapter: Upgrading to VitalQIP X.Y
 - *ENUM Manager User Guide, 190-409-067*
Chapter: Installing ENUM Manager.
-
- 2 Upgrade the *VitalSuite*[®] Integrated Service Assurance Software.

Reference: Refer to the [OLCS documentation section \(https://support.lucent.com/portal/olcsHome.do\)](https://support.lucent.com/portal/olcsHome.do):

- *VitalSuite® Software Integrated Service Assurance and Network Fault Management Upgrade Guide for a SUN Computer*, 190-422-802
Chapter: Application Upgrade on a Sun Computer
- *VitalSuite® Software Integrated Service Assurance and Network Fault Management Upgrade Guide for an HP Computer*, 190-422-804
Chapter: Application Upgrade on an HP Computer
- *VitalSuite® Software Integrated Service Assurance and Network Fault Management Installation Guide*, 190-422-801
Chapter: Install the VitalSuite ISA Application Software

3 Upgrade the *VitalSuite®* Network Trouble Patterning Software.

Reference: Refer to the [OLCS documentation section \(https://support.lucent.com/portal/olcsHome.do\)](https://support.lucent.com/portal/olcsHome.do):

- *VitalSuite® Software Network Trouble Patterning Installation Guide*, 190-405-575
Chapter: Overview.

4 Upgrade the *VitalSuite®* Voice Activation Manager Software.

Reference: Refer to the [OLCS documentation section \(https://support.lucent.com/portal/olcsHome.do\)](https://support.lucent.com/portal/olcsHome.do):

- *Navis Voice Activation Manager Operations, Administration and Maintenance Guide*, 365-370-328
Chapter: System Operations - Software Upgrades.
- *Navis Voice Activation Manager System Administration (International) Guide*, 365-370-327

5 Upgrade the *VitalSuite®* Services Activation Manager Software.

Reference: Refer to the [OLCS documentation section \(https://support.lucent.com/portal/olcsHome.do\)](https://support.lucent.com/portal/olcsHome.do):

- *VitalQIP Workflow Manager, Installation Guide*, 109-409-064

6 To verify successful update consider the following:

- Interactions between the Lucent *VitalSuite®* Software products and other NEs



Software upgrade flow for EMS/Portal products

Purpose

This topic describes the process to perform an end to end software upgrade for EMS/Portal products.

The upgrade steps listed are for the following products:

- eSM
- OMC-H
- OMC-CN
- OMC-P
- BTS
- LCM

Before you begin

Before you begin the software upgrade of this element in the IMS network, make backups or ensure you have recent backups available.

Refer to the *IMS Solution Release Notes* of the IMS network for requirements that are specific for the upgrade procedure for the IMS network.

Refer to the *documentation set* and the *Release Notes* of the network element for requirements that are specific for the upgrade procedure for that network element.

Guideline

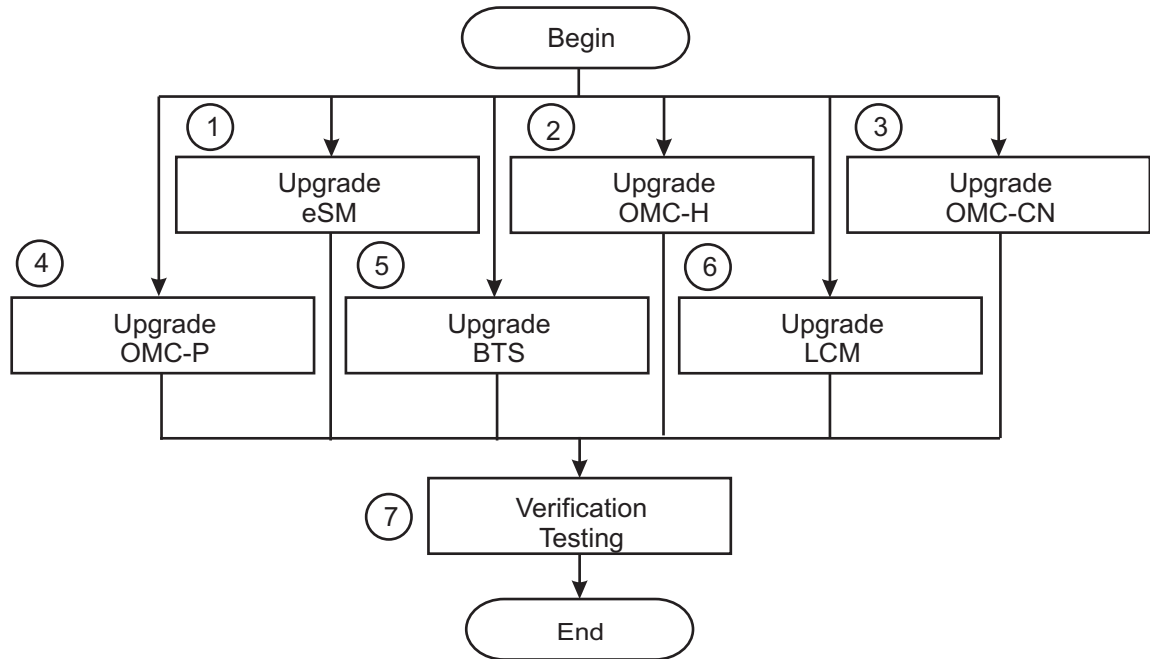
When the upgrade of an element in the IMS network is not applicable then the upgrade of this element can be skipped.

Important! Elements in this grouping can be upgraded at the same time. *HOWEVER* all of the elements in a grouping *MUST* be completed before moving to the next grouping.

Important! Note that the numbers in the following figure do not indicate an order but signify the associated reference.

EMS/Portal products software upgrade process diagram

The EMS/Portal products software upgrade process diagram:



EMS/Portal products software upgrade process

The software upgrade consists of the following stages:

1 Upgrade the eSM.

Reference: Refer to the [OLCS documentation section \(https://support.lucent.com/portal/olcsHome.do\)](https://support.lucent.com/portal/olcsHome.do):

- *Intelligent Network (IN) Enhanced Services Manager (ESM) Service Version Management (SVM), 270-720-343*

Chapter: Service Version Management (SVM) Tasks.

2 Upgrade the OMC-H software.

Reference: Refer to the [OLCS documentation section \(https://support.lucent.com/portal/olcsHome.do\)](https://support.lucent.com/portal/olcsHome.do):

- *OMC-H System Installation, 401-380-084*
Part: Installation of a Whole OMC System, Chapter: Upgrade of Lucent OMC-H.
- *OMC-H Configuration Management, 401-380-078* **Chapter: Upgrade of Lucent OMC-H.**

3 Upgrade the OMC-CN software.

Reference: Refer to the [OLCS documentation section \(https://support.lucent.com/portal/olcsHome.do\)](https://support.lucent.com/portal/olcsHome.do):

- *OMC-CN System Installation*, 401-380-816
Chapter: Upgrade of Lucent OMC-CN.

4 Upgrade the OMC-P.

Reference: Refer to the [OLCS documentation section \(https://support.lucent.com/portal/olcsHome.do\)](https://support.lucent.com/portal/olcsHome.do):

- *Lucent Control and Gateway Platform Element Management System (PlexView EMS) Installation Guide for the Lucent Gateway Platform*, 255-400-401
Chapter: Installing Oracle and Installing or Upgrading EMS.

5 Upgrade the BTS.

Reference: Refer to the [OLCS documentation section \(https://support.lucent.com/portal/olcsHome.do\)](https://support.lucent.com/portal/olcsHome.do):

- *Lucent Gateway Platform PlexView™ Advanced Traffic Collection for the Advanced Reporting System Installation & Setup Guide*, 255-400-202
Chapter: Prepare and Install or Upgrade the Advanced Traffic Collector.

6 Upgrade the software on the Lucent Communication Manager nodes.

For a multi node Lucent CM system, a software upgrade will upgrade the software on all application nodes, database nodes and universal nodes.

Reference: Refer to the [OLCS documentation section \(https://support.lucent.com/portal/olcsHome.do\)](https://support.lucent.com/portal/olcsHome.do):

- *Lucent Communication Manager Administration Guide*, 255-490-001
Chapter: Configuration management - Software.

7 To verify successful update consider the following:

- Interactions between the eSM and other NEs
- Interactions between the OMC-H and other NEs
- Interactions between the OMC-CN and other NEs
- Interactions between the OMC-P and other NEs
- Interactions between the Lucent Communication Manager and other NEs

- Start up and log in to the Lucent Communication Manager with the Lucent CM Explorer administration client.
- Start up and log in to the Lucent Communication Manager with the Lucent CM user client.
- Set up calls and perform configuration actions with the Lucent CM user client.
- Setup end to end IMS session scenarios (UE-UE, UE-PSTN, PSTN-UE)



Software upgrade flow for NE/AS products

Purpose

This topic describes the process to perform an end to end software upgrade for NE/AS products.

The upgrade steps listed are for the following products:

- USDS
- *Lucent Datagrid*TM
- Surepay CCF
- Lucent Gateway Platform
- *AnyPath* Messaging System
- *Audiocodes* EMS/MRF

Before you begin

Before you begin the software upgrade of this element in the IMS network, make backups or ensure you have recent backups available.

Refer to the *IMS Solution Release Notes* of the IMS network for requirements that are specific for the upgrade procedure for the IMS network.

Refer to the *documentation set* and the *Release Notes* of the network element for requirements that are specific for the upgrade procedure for that network element.

Guideline

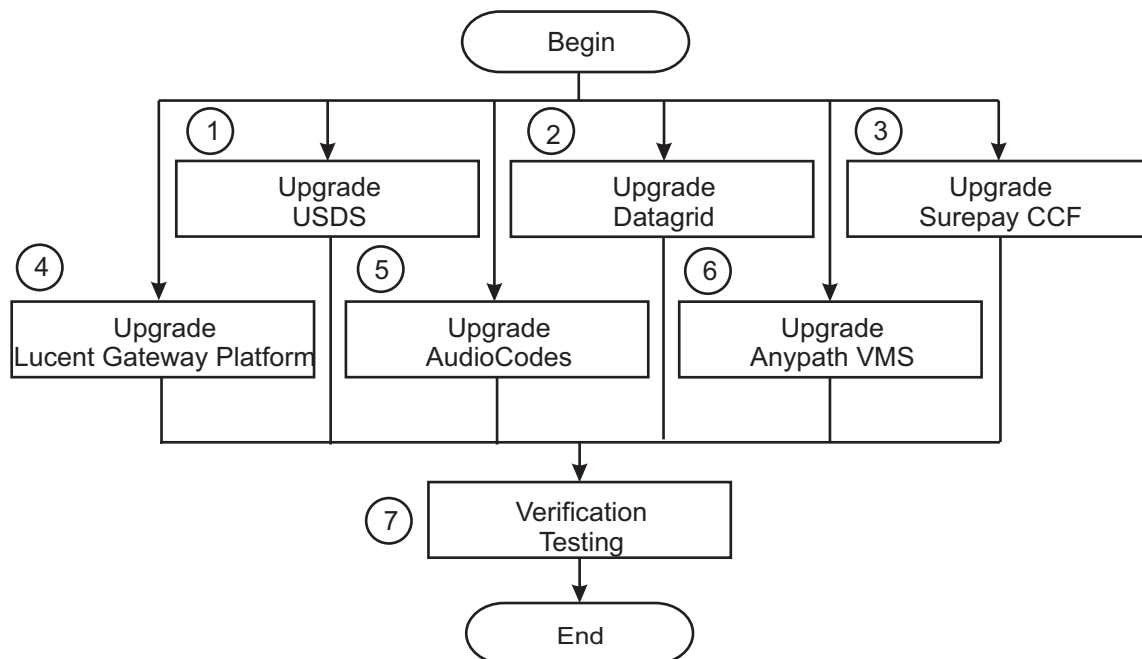
When the upgrade of an element in the IMS network is not applicable then the upgrade of this element can be skipped.

Important! Elements in this grouping can be upgraded at the same time. *HOWEVER* all of the elements in a grouping *MUST* be completed before moving to the next grouping.

Important! Note that the numbers in the following figure do not indicate an order but signify the associated reference.

NE/AS products software upgrade process diagram

The NE/AS products software upgrade process diagram:



NE/AS products software upgrade process

The software upgrade consists of the following stages:

1 Upgrade the Lucent SDHLR software.

Reference: Refer to the [OLCS documentation section \(https://support.lucent.com/portal/olcsHome.do\)](https://support.lucent.com/portal/olcsHome.do):

- *MiLife® Application Server (MAS) Services Administration Guide, 275-710-652*
Chapter: Updating a service package application.
- *MiLife® Application Server/Enhanced Control Server Release LE Retrofit Procedures, 275-700-651*
Chapter: Implementing retrofit.
- *Intelligent Network (IN) MiLife® Application Server (MAS) Customer Software Installation Guide, 275-700-175*
Chapter: MAS Platform Release and Tools Installation: New Install.

2 Upgrade the Lucent Datagrid™ software.

Reference: Refer to the [OLCS documentation section \(https://support.lucent.com/portal/olcsHome.do\)](https://support.lucent.com/portal/olcsHome.do):

- *MiLife® Application Server (MAS) Services Administration Guide, 275-710-652*
Chapter: Updating a service package application.
- *MiLife® Application Server/Enhanced Control Server Release LE Retrofit Procedures, 275-700-651*
Chapter: Implementing retrofit.
- *Intelligent Network (IN) MiLife® Application Server (MAS) Customer Software Installation Guide, 275-700-175*
Chapter: MAS Platform Release and Tools Installation: New Install.

3 Upgrade the *MiLife® SurePay®* CCF

Reference: Refer to the [OLCS documentation section \(https://support.lucent.com/portal/olcsHome.do\)](https://support.lucent.com/portal/olcsHome.do):

- *MiLife® Application Server Services Administration Guide, 275-710-652*
Chapter: Updating a service package application.
- *MiLife® Application Server/Enhanced Control Server Release LE Retrofit Procedures, 275-700-651*
Chapter: Implementing retrofit.
- *MiLife® SurePay® CCF OA&M manual, 270-725-058*
Chapter: Installing the SurePay® Charging Collection Function (CCF) SPA.

4 Upgrade the Lucent Gateway Platform.

Reference: Refer to the [OLCS documentation section \(https://support.lucent.com/portal/olcsHome.do\)](https://support.lucent.com/portal/olcsHome.do):

- *Lucent Gateway Platform Switch Software Change procedures, 255-400-013*
Part: Task Index List; Chapter: Upgrading a Lucent Network Controller.
- *Lucent Gateway Platform Switch Software Change procedures, 255-400-013*
Part: Task Index List; Chapter: Upgrading a Lucent Signaling Gateway.
- *Lucent Gateway Platform Switch Software Change procedures, 255-400-013*
Part: Task Index List; Chapter: Upgrading a Lucent Network Gateway.

5 Upgrade the AudioCodes EMS/MRF.

Reference: Refer to the [OLCS documentation section \(https://support.lucent.com/portal/olcsHome.do\)](https://support.lucent.com/portal/olcsHome.do):

- *EMS User's Manual*, LTRT-91005
Chapter: Gateway Installation, Software Update and regional files distribution.
- *IP2000&IPM Series User Manual*, LTRT-73202
Chapter: Upgrading the IPmedia 2000
- *IPM 1610 User Manual*, LTRT-58803
Chapter: Upgrading the IPM-1610 software
- *EMS User's Manual*, LTRT-91005
Chapter: Gateway Installation, Software Update and regional files distribution.

6 Upgrade the *AnyPath*[®] Messaging System.

Reference: Refer to the [OLCS documentation section \(https://support.lucent.com/portal/olcsHome.do\)](https://support.lucent.com/portal/olcsHome.do):

- *AnyPath Software Patch Notification & Installation Procedure*

7 To verify successful update consider the following:

- Interactions between the OMC-H and other NEs
- Interactions between the *Lucent Datagrid*[™] and other NEs
- Interactions between the Lucent SDHLR and other NEs
- Interactions between the Lucent Gateway Platform and other NEs
- Interactions between the AudioCodes media server and other NEs
- Interactions between the *AnyPath*[®] Messaging System and other NEs
- Setup end to end IMS session scenarios (UE-UE, UE-PSTN, PSTN-UE)

□

Software upgrade flow for Lucent CP products

Purpose

This topic describes the process to perform an end to end software upgrade for Lucent CP products.

The upgrade steps listed are for the following products:

- Lucent Session Manager
- Lucent Network Controller
- Lucent Service Broker
- Lucent FS 2500
- Lucent FS 5000

Before you begin

Before you begin the software upgrade of this element in the IMS network, make backups or ensure you have recent backups available.

Refer to the *IMS Solution Release Notes* of the IMS network for requirements that are specific for the upgrade procedure for the IMS network.

Refer to the *documentation set* and the *Release Notes* of the network element for requirements that are specific for the upgrade procedure for that network element.

Important! When the FS 2500 or FS 5000 are not on the same Lucent CP as the Lucent SM, they may be upgraded concurrently with other Lucent CPs.

Guideline

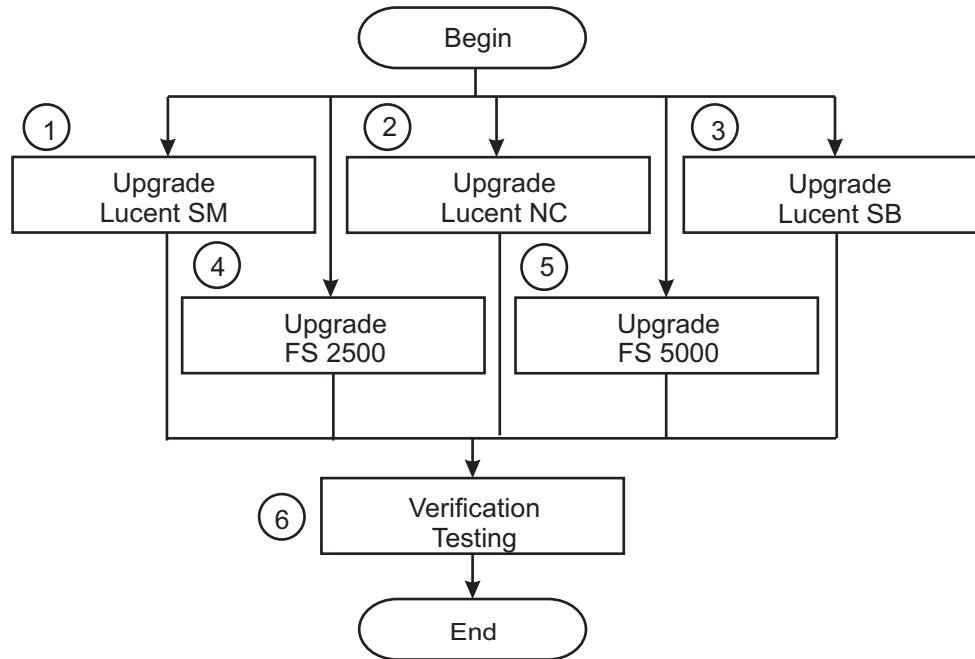
When the upgrade of an element in the IMS network is not applicable then the upgrade of this element can be skipped.

Important! Elements in this grouping can be upgraded at the same time. *HOWEVER* all of the elements in a grouping *MUST* be completed before moving to the next grouping.

Important! Note that the numbers in the following figure do not indicate an order but signify the associated reference.

Lucent CP products software upgrade process diagram

The Lucent CP products software upgrade process diagram:



Lucent CP products software upgrade process

The software upgrade consists of the following stages:

.....

1 Upgrade the Lucent Session Manager.

Reference: Refer to the [OLCS documentation section \(https://support.lucent.com/portal/olcsHome.do\)](https://support.lucent.com/portal/olcsHome.do):

- *Lucent Control Platform Lucent NC, Lucent SM, Lucent FS 2500 and Lucent FS 5000 OAM&P manual, 275-900-360*

Part: Configuration Management - Lucent CP; Chapter: Manage software - Software update.

.....

2 Upgrade the Lucent Network Controller.

Reference: Refer to the [OLCS documentation section \(https://support.lucent.com/portal/olcsHome.do\)](https://support.lucent.com/portal/olcsHome.do):

- *Lucent Control Platform Lucent NC, Lucent SM, Lucent FS 2500 and Lucent FS 5000 OAM&P manual, 275-900-360*

Part: Configuration Management - Lucent CP; Chapter: Manage software - Software update.

3 Upgrade the *Lucent Service Broker*[™].

Reference: Refer to the [OLCS documentation section \(https://support.lucent.com/portal/olcsHome.do\)](https://support.lucent.com/portal/olcsHome.do):

- *Lucent Control Platform Lucent NC, Lucent SM, Lucent FS 2500 and Lucent FS 5000 OAM&P manual, 275-900-360*

Part: Configuration Management - Lucent CP; Chapter: Manage software - Software update.

4 Upgrade the Lucent Feature Server 2500 (MMAS and HOAS/AXAS).

Reference: Refer to the [OLCS documentation section \(https://support.lucent.com/portal/olcsHome.do\)](https://support.lucent.com/portal/olcsHome.do):

- *Lucent Control Platform Lucent NC, Lucent SM, Lucent FS 2500 and Lucent FS 5000 OAM&P manual, 275-900-360*

Part: Configuration Management - Lucent CP; Chapter: Manage software - Software update.

5 Upgrade the Lucent Feature Server 5000.

Reference: Refer to the [OLCS documentation section \(https://support.lucent.com/portal/olcsHome.do\)](https://support.lucent.com/portal/olcsHome.do):

- *Lucent Control Platform Lucent NC, Lucent SM, Lucent FS 2500 and Lucent FS 5000 OAM&P manual, 275-900-360*

Part: Configuration Management - Lucent CP; Chapter: Manage software - Software update.

6 To verify successful update consider the following:

- Interactions between the Lucent Control Platform and other NEs
- Setup end to end IMS session scenarios (UE-UE, UE-PSTN, PSTN-UE)

□

Software upgrade flow for Application Servers

Purpose

This topic describes the process to perform an end to end software upgrade for Application Servers.

The upgrade steps listed are for the following products:

- *MiLife*® Intelligent Services Gateway
- *MiLife*® Presence Solution
- Lucent Active PhoneBook
- *MiLife*® iLocator
- eMRS
- FS3000

Before you begin

Before you begin the software upgrade of this element in the IMS network, make backups or ensure you have recent backups available.

Refer to the *IMS Solution Release Notes* of the IMS network for requirements that are specific for the upgrade procedure for the IMS network.

Refer to the *documentation set* and the *Release Notes* of the network element for requirements that are specific for the upgrade procedure for that network element.

Guideline

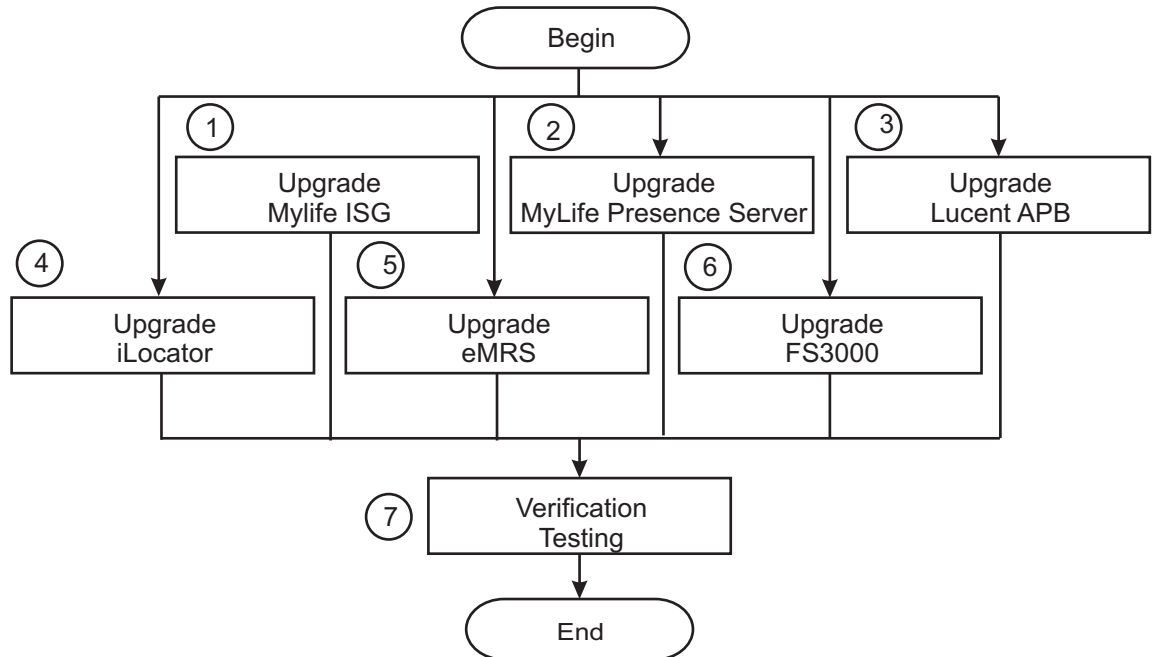
When the upgrade of an element in the IMS network is not applicable then the upgrade of this element can be skipped.

Important! Elements in this grouping can be upgraded at the same time. *HOWEVER* all of the elements in a grouping *MUST* be completed before moving to the next grouping.

Important! Note that the numbers in the following figure do not indicate an order but signify the associated reference.

Application Servers software upgrade process diagram

The Application Servers software upgrade process diagram:



Application Servers software upgrade process

The software upgrade consists of the following stages:

1 Upgrade the *MiLife*[®] Intelligent Services Gateway

Reference: [OLCS documentation section \(https://support.lucent.com/portal/olcsHome.do\)](https://support.lucent.com/portal/olcsHome.do):

- Refer to the *MiLife*[®] Application Server (MAS) Services Administration Guide, 275-710-652

Chapter: Updating a service package application,

- *MiLife*[®] Application Server/Enhanced Control Server Release LE Retrofit Procedures, 275-700-651

Chapter: Implementing retrofit

2 Upgrade the *MiLife*[®] Presence Solution

Reference: [OLCS documentation section \(https://support.lucent.com/portal/olcsHome.do\)](https://support.lucent.com/portal/olcsHome.do):

- *MiLife® Application Server (MAS) Services Administration Guide, 275-710-652*
Chapter: Updating a service package application
 - *MiLife® Application Server/Enhanced Control Server Release LE Retrofit Procedures, 275-700-651*
Chapter: Implementing retrofit
-

3 Upgrade the Lucent Active PhoneBook

Reference: Refer to the [OLCS documentation section \(https://support.lucent.com/portal/olcsHome.do\)](https://support.lucent.com/portal/olcsHome.do):

- *MiLife® Application Server (MAS) Services Administration Guide, 275-710-652*
Chapter: Updating a service package application,
 - *MiLife® Application Server/Enhanced Control Server Release LE Retrofit Procedures, 275-700-651*
Chapter: Implementing retrofit
-

4 Upgrade the *MiLife®* iLocator

Reference: Refer to the [OLCS documentation section \(https://support.lucent.com/portal/olcsHome.do\)](https://support.lucent.com/portal/olcsHome.do):

- *MiLife® Application Server (MAS) Services Administration Guide, 275-710-652*
Chapter: Updating a service package application
 - *MiLife® Application Server/Enhanced Control Server Release LE Retrofit Procedures, 275-700-651*
Chapter: Implementing retrofit
-

5 Upgrade the eMRS (Lucent MRS).

Reference: Refer to the [OLCS documentation section \(https://support.lucent.com/portal/olcsHome.do\)](https://support.lucent.com/portal/olcsHome.do):

- *Enhanced Media Resource Server System Operations and Administration manual, 270-780-411*
Part: SPA and voice management; Chapter - Updating a service package application
-

6 Upgrade the Lucent Feature Server 3000.

Reference: Refer to the [OLCS documentation section \(https://support.lucent.com/portal/olcsHome.do\)](https://support.lucent.com/portal/olcsHome.do):

- Installation & Maintenance: *BroadWorks Software Management Guide Release, 03-BD5000-00*

Chapter: BroadWorks Upgrade Procedure.

- 7** To verify successful update consider the following:
- Interactions between the *MiLife*[®] Application Server and other NEs
 - Interactions between the eMRS and other NEs
 - Interactions between the Lucent Feature Server 3000 and other NEs
 - Setup end to end IMS session scenarios (UE-UE, UE-PSTN, PSTN-UE)



Glossary

B **BGCF**
 Breakout Gateway Control Function

D **DHCP**
 Dynamic Host Configuration Protocol

DNS
 Domain Name System

E **EDGE**
 Enhanced Data rates for Global Evolution

EDGE
 Enhanced Decision Graph Editor

EEAS
 E.164 Expansion Application Server

EMS
 element management system

ENUM
 Telephone Numbering Mapping

ENUM
 E.164 Number to URI Mapping

G **GPRS**
 General Packet Radio Service

GSM

Global System for Mobile Communications

H HSDPA

High-Speed Downlink Packet Access

HSS

Home Subscriber Server

I I-CSCF

Interrogating Call Session Control Function

IEAS

IMS Emergency Application Server

IMS

IP Multimedia Subsystem

IP

Internet Protocol

L LMRS

Lucent MRS

M MGCF

media gateway control function

MGW

media gateway

MRFC

Multimedia Resource Function Controller

MRFP

Media Resource Function Processor

N NE

network element

NLT

NMS

network management system

O OAM&P

Operations, Administration, Maintenance & Provisioning

OMC

Operation Management Center

OSS

Operations Support System

P P-CSCF

Proxy Call Session Control Function

PDF

Policy Decision Function

PDF

power distribution frame

S S-CSCF

Serving Call Session Control Function

S/BC

Session Border Controller

SAM

Subsequent Address Message

SAM

Secure Access Manager

SCIM

Service Capability Interaction Manager

SIP

Session Initiation Protocol

SU

Software Update

U **UMTS**
Universal Mobile Telecommunications System

V **VAM**

W **WiFi**
Wireless Fidelity

WLAN
wireless local area network

Index

- A** Alcatel-Lucent IMS
 - application layer products, [1-8](#)
 - media and endpoint layer products, [1-4](#)
 - OAM&P products, [1-10](#)
 - session control layer products, [1-6](#)
- Alcatel-Lucent IMS architecture, [1-2](#)
- Application layer products, [1-8](#)
- AudioCodes elements
 - MRF, [2-33](#)
 - MRF EMS, [2-33](#)
-
- F** FS3000 elements
 - BroadWorks EMS, [2-41](#)
 - BroadWorks NE, [2-41](#)
-
- L** Lucent Control Platform managed elements
 - Lucent FS 2500, [2-37](#)
 - Lucent FS 5000, [2-37](#)
 - Lucent MRS, [2-37](#)
 - Lucent Service Broker, [2-37](#)
 - Lucent Session Manager, [2-37](#)
-
- M** Media and endpoint layer products, [1-4](#)
- MiLife*[®] Application Server supported elements
 - Lucent Active PhoneBook, [2-43](#)
 - MiLife*[®] iLocator, [2-43](#)
 - MiLife*[®] Intelligent Services Gateway, [2-43](#)
 - MiLife*[®] Presence Solution, [2-43](#)
-
- O** OAM&P products, [1-10](#)
- OMC-H managed elements
 - Lucent Datagrid, [2-18](#), [2-20](#)
 - Lucent SDHLR, [2-18](#), [2-20](#)
-
- S** Session control layer products, [1-6](#)
- Software upgrade
 - flow *AnyPath*[®] Messaging System elements, [2-35](#)
 - flow AudioCodes elements, [2-33](#)
 - flow EMS/Portal products, [2-53](#)
 - flow eSM element, [2-16](#)
-
- flow FS3000 elements, [2-41](#)
- flow IMS solution, [2-8](#)
- flow Lucent CM elements, [2-28](#)
- flow Lucent CP products, [2-61](#)
- flow Lucent Gateway Platform, [2-30](#)
- flow *MiLife*[®] Application Server elements, [2-43](#)
- flow *MiLife* SurePay CCF elements, [2-24](#)
- flow NE/AS products, [2-57](#)
- flow OMC-CN elements, [2-22](#)
- flow OMC-H elements, [2-18](#), [2-20](#)
- flow OMC-P, [2-26](#)
- flow VitalSuite products, [2-13](#), [2-50](#)
- parallel flow IMS solution, [2-47](#)
-
- U** Upgrade
 - Application Servers, [2-64](#)

.....
V VitalSuite products

VitalQIP DNS/ENUM, [2-13](#),
[2-50](#)

VitalSuite ISA, [2-13](#), [2-50](#)

VitalSuite NTP, [2-13](#), [2-50](#)

VitalSuite SAM, [2-13](#)

VitalSuite VAM, [2-13](#)